










Spokane Workforce Development Area Local GMAP

October 2009
Presented November 20, 2009



**Employment
Security
Department**
WASHINGTON STATE




MAJOR PROJECTS LEGEND

PROJECT INDICATOR	SYMBOL	DEFINITION
Scope		Within scope
		Minor scope deviation
		Major scope deviation
Schedule		Within schedule
		Minor schedule deviation
		Major schedule deviation
Quality		Project's quality maintained
		Project's quality diminished
		Project's quality compromised
Risk	Low	No anticipated change to quality / schedule
	Medium	Potential change to quality / schedule
	High	Likely change to quality / schedule

PED = Project End Date

◆ = Decision point or one-time event

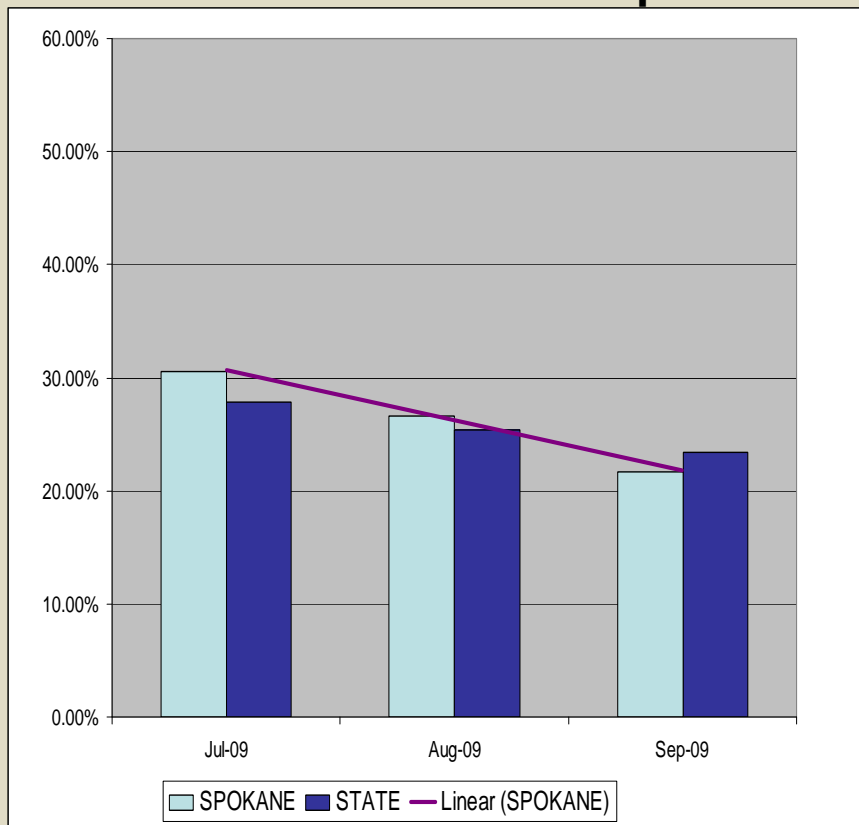
MAJOR PROJECTS - UPDATE

Project	Dashboard	Comments	September - October Activities
Functional Integration PED: 6/30/2010 Janet	Scope:  Schedule:  Quality:  Risk: Medium	<ul style="list-style-type: none"> • SCOPE: To implement the framework initiative at WorkSource Spokane 	<ul style="list-style-type: none"> • Core Services have been identified. • Lean Consultant; has been working with the various programs in mapping their activities. • The Task List has been prioritized. • The Customer Flow process has been developed. • Frankie continues to work with Office Services on the building remodel. • Training has been identified – the timeframe is under development.

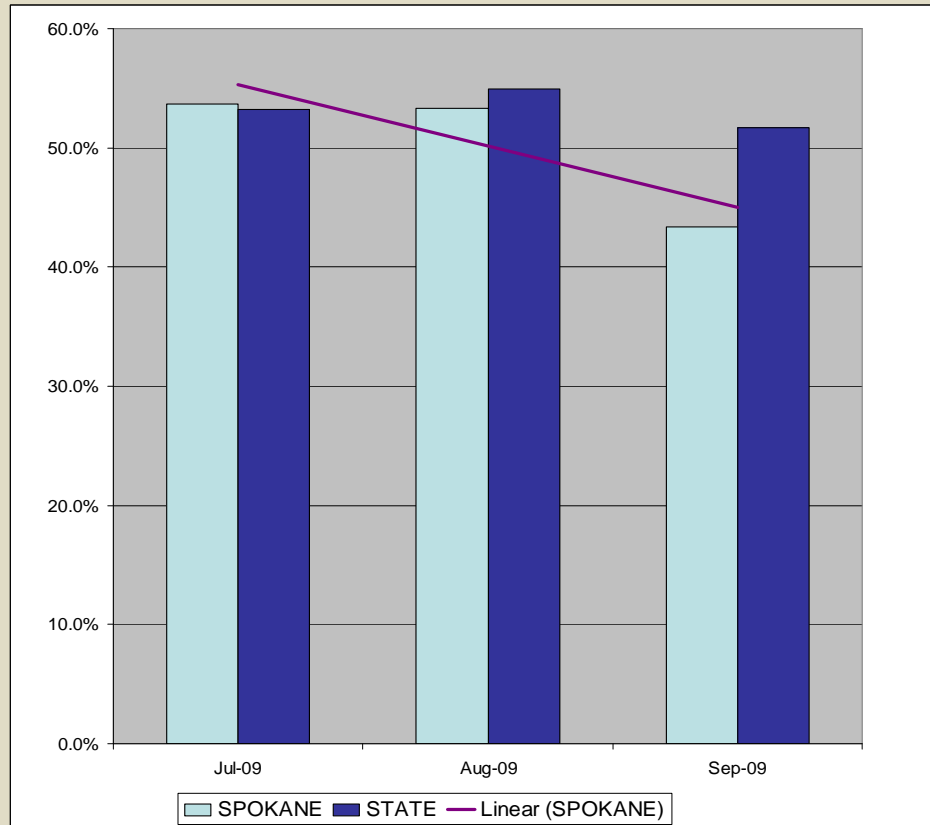
WORKFIRST

WorkFirst Participation Requirements

Job Search Federal Participation



Actual Time in Job Search



MCAR DATA (LEP)	Oct MCAR
Employment Security	38.32%

**Job Search Federal Participation
Goal 30%**
Data is finalized through September.

Division of Vocational Rehabilitation (DVR)

DVR at WorkSource Spokane

DVR ARRA Contract with WDC

- Serve a minimum of 30 DVR clients who are ready for employment
- Place at least 22 into permanent, full-time jobs within high demand occupations that pay mid-to-high salaries with benefits before January 15, 2010

Currently Enrolled	Placed into Employment	Successful Closure (90 days of Emp)
12	2	0

BUSINESS SOLUTIONS

Business Solutions Priority Area

Obtain a closer match between WA Job Orders and Job Seekers desired occupation (3 digit ONET Code)

Will be addressing		
Look at 3 digit ONET Code	To match the job orders closer to the desired occupations of current job seekers.	
Measures	Details	October
Top 5 Job Seeker desired occupations by 3 digit ONET	Compare to Job Orders. Provide direction on where to focus efforts.	41-2 Cashiers, Retail Salespersons 43-4 Customer Service Reps, Receptionist & Information Clerks 43-9 Data Entry Keyers, office Clerks, General, Office & Administration Support Workers, All Others 47-2 Construction Laborers, Drywall Installers, Pipe Fitters 51-9 Production Laborers
WA Job Order Match per desired occupation		41-2 Cashiers, Retail Salespersons - 3.8% 43-4 Customer Service Reps, Receptionist & Information Clerks - 7.5% 43-9 Data Entry Keyers, office Clerks, General, Office & Administration Support Workers, All Others - 4.8% 47-2 Construction Laborers, Drywall Installers, Pipe Fitters - 5.4% 51-9 Production Laborers - 2.7%
Percentage match per 3 digit ONET Code		24.20%
		October
Number of ARRA WA Job Orders		2
Percentage match per 3 digit ONET Code for ARRA funded Job Orders	Are ARRA funded jobs available and matching job seekers.	12.8%

EMPLOYMENT SERVICES

Employment Services

Continuous Engagement Outcomes

Measures	Details	September Outcomes	October Outcomes
Total Job Seekers Served	Unduplicated job seekers seen by ES in Month	3464	4044
# of Service Plans entered into SKIES	Service Plans	72	116
Of those not employed, were they referred to training	Unduplicated referrals to training and/or WIA	233	371
Quality of Service Plans	Random Service Plan audits	In Process.	
Follow up occurring		Workgroup has been formed and is currently testing the process.	
Barriers to follow ups	Determine barriers to obtain follow ups with job seeker	Workgroup is looking at barriers to follow ups.	

Workforce Investment Act (WIA)

WIA Adult Program PY09

(Carry-In:)	203	203	203	203	203	203	203	203	203	203	203	203
Total Participants	July	Aug	Sept	Oct	Nov	Dec	Jan	Feb	Mar	Apr	May	June
Total Served - Planned	233	256	280	313	332	345	358	373	403	418	438	450
Total Served - Actual	250	277	308	321								
	107%	108%	110%	103%	0%	0%	0%	0%	0%	0%	0%	0%
175% of LLSIL (40% Max)	7	10	13	8								
% of Total Served	3%	4%	4%	2%	0%	0%	0%	0%	0%	0%	0%	0%
New Registrants Planned	30	53	77	110	129	142	155	170	200	215	235	247
New Registrants Actual	47	74	105	118								
% of plan	157%	140%	136%	107%	0%	0%	0%	0%	0%	0%	0%	0%
Exits	July	Aug	Sept	Oct	Nov	Dec	Jan	Feb	Mar	Apr	May	June
Total Exits Planned	44	65	86	108	122	141	177	195	217	233	247	277
Total Exits Actual	13	22	25	34								
% of plan	30%	34%	29%	31%	0%	0%	0%	0%	0%	0%	0%	0%
Placement Planned	40	59	78	98	111	128	160	176	196	210	223	250
Placement Actual	13	22	24	33								
% of plan	33%	37%	31%	34%	0%	0%	0%	0%	0%	0%	0%	0%
Other Exits Actual	0	0	1	1								
Neutral Exits	0	0	0	0								
Wage at Placement	July	Aug	Sept	Oct	Nov	Dec	Jan	Feb	Mar	Apr	May	June
Planned	\$12.00	\$12.00	\$12.00	\$12.00	\$12.00	\$12.00	\$12.00	\$12.00	\$12.00	\$12.00	\$12.00	\$12.00
Actual	\$15.32	\$13.75	\$13.60	\$13.51								
% of plan	128%	115%	113%	113%	0%	0%	0%	0%	0%	0%	0%	0%
Expenditures	July	Aug	Sept	Oct	Nov	Dec	Jan	Feb	Mar	Apr	May	June
Planned	\$71,032	\$142,063	\$213,095	\$284,127	\$355,158	\$426,190	\$497,222	\$568,253	\$639,285	\$710,317	\$781,348	\$905,000
Actual	\$80,605	\$128,536	\$171,027	\$244,212								
% of plan	113%	90%	80%	86%	0%	0%	0%	0%	0%	0%	0%	0%

ARRA - WIA Adult Program PY09

(Carry-In:)	0	0	0	0	0	0	0	0	0	0	0	0
Total Participants	July	Aug	Sept	Oct	Nov	Dec	Jan	Feb	Mar	Apr	May	June
Total Served - Planned	30	53	77	110	129	149	150	150	150	150	150	150
Total Served - Actual	61	83	113	129								
	203%	157%	147%	117%	0%	0%	0%	0%	0%	0%	0%	0%
175% of LLSIL (40% Max)	4	7	10	4								
% of Total Served	7%	8%	9%	3%								
New Registrants Planned	30	53	77	110	129	142	155	170	200	215	235	247
New Registrants Actual	61	83	113	129								
% of plan	203%	157%	147%	117%	0%	0%	0%	0%	0%	0%	0%	0%
Exits	July	Aug	Sept	Oct	Nov	Dec	Jan	Feb	Mar	Apr	May	June
Total Exits Planned	0	15	30	45	54	65	75	85	100	125	140	150
Total Exits Actual	1	2	2	6								
% of plan	0%	13%	7%	13%	0%	0%	0%	0%	0%	0%	0%	0%
Placement Planned	0	14	27	41	50	59	68	77	90	113	126	135
Placement Actual	1	2	2	6								
% of plan	0%	14%	7%	15%	0%	0%	0%	0%	0%	0%	0%	0%
Other Exits Actual	0	0	0	0								
Neutral Exits	0	0	0	0								
Wage at Placement	July	Aug	Sept	Oct	Nov	Dec	Jan	Feb	Mar	Apr	May	June
Planned	\$12.00	\$12.00	\$12.00	\$12.00	\$12.00	\$12.00	\$12.00	\$12.00	\$12.00	\$12.00	\$12.00	\$12.00
Actual	\$21.63	\$15.82	\$15.82	\$15.90								
% of plan	180%	132%	132%	133%	0%	0%	0%	0%	0%	0%	0%	0%
Expenditures	July	Aug	Sept	Oct	Nov	Dec	Jan	Feb	Mar	Apr	May	June
Planned	\$25,102	\$50,205	\$75,307	\$100,410	\$125,512	\$150,614	\$175,717	\$200,819	\$225,921	\$251,024	\$276,126	\$326,331
Actual	\$68,713	\$110,336	\$142,690	\$202,300								
% of plan	274%	220%	189%	201%	0%	0%	0%	0%	0%	0%	0%	0%

WIA Dislocated Worker Program PY09

Yellow is mod (Carry-In:)	274	274	274	274	274	274	274	274	274	274	274	274
Total Participants	July	Aug	Sept	Oct	Nov	Dec	Jan	Feb	Mar	Apr	May	June
Total Served - Planned	295	316	337	358	379	399	419	439	459	479	499	525
Total Served - Actual	318	343	387	404								
	108%	109%	115%	113%	0%	0%	0%	0%	0%	0%	0%	0%
New Registrants Planned	21	42	63	84	105	125	145	165	185	205	225	251
	44	69	113	130								
% of plan	210%	164%	179%	155%	0%	0%	0%	0%	0%	0%	0%	
Exits	July	Aug	Sept	Oct	Nov	Dec	Jan	Feb	Mar	Apr	May	June
Total Exits Planned	43	81	116	139	155	173	209	236	259	281	298	315
Total Exits Actual	24	36	43	53								
% of plan	56%	44%	37%	38%	0%	0%	0%	0%	0%	0%	0%	0%
Placement Planned	39	73	105	125	139	156	188	213	233	253	269	284
Placement Actual	24	30	43	52								
% of plan	62%	41%	41%	42%	0%	0%	0%	0%	0%	0%	0%	0%
Other Exits Actual	0	0	0	1								
Neutral Exits	0	0	0	0								
Wage at Placement	July	Aug	Sept	Oct	Nov	Dec	Jan	Feb	Mar	Apr	May	June
Planned	\$19.37	\$19.37	\$19.37	\$19.37	\$19.37	\$19.37	\$19.37	\$19.37	\$19.37	\$19.37	\$19.37	\$19.37
Actual	\$16.05	\$15.43	\$16.65	\$16.79								
% of plan	83%	80%	86%	87%	0%	0%	0%	%	0%	0%	0%	0%
Expenditures	July	Aug	Sept	Oct	Nov	Dec	Jan	Feb	Mar	Apr	May	June
Planned	\$80,802	\$161,605	\$242,407	\$323,209	\$404,012	\$484,814	\$565,616	\$646,419	\$727,221	\$808,023	\$888,826	\$1,024,000
Actual	\$80,501	\$136,183	\$214,793	\$294,194								
% of plan	100%	84%	89%	91%	0%	0%	0%	0%	0%	0%	0%	0%

ARRA - WIA Dislocated Worker Program PY09

Yellow is mod (Carry-In:)	0	0	0	0	0	0	0	0	0	0	0	0
Total Participants	July	Aug	Sept	Oct	Nov	Dec	Jan	Feb	Mar	Apr	May	June
Total Served - Planned	30	60	90	120	150	180	210	240	270	300	300	300
Total Served - Actual	60	82	127	152								
	200%	137%	141%	127%	0%	0%	0%	0%	0%	0%	0%	0%
New Registrants Planned	30	60	90	120	150	180	210	240	270	300	300	300
	60	82	127	152								
% of plan	200%	137%	141%	127%	0%	0%	0%	0%	0%	0%	0%	0%
Exits	July	Aug	Sept	Oct	Nov	Dec	Jan	Feb	Mar	Apr	May	June
Total Exits Planned	0	10	28	39	50	72	111	167	200	235	267	300
Total Exits Actual	1	2	4	0								
% of plan	0%	20%	14%	0%	0%	0%	0%	0%	0%	0%	0%	0%
Placement Planned	0	9	25	35	45	65	100	150	180	210	240	270
Placement Actual	1	0	4	7								
% of plan	0%	0%	16%	20%	0%	0%	0%	0%	0%	0%	0%	0%
Other Exits Actual	0	0	0	0								
Neutral Exits	0	0	0	0								
Wage at Placement	July	Aug	Sept	Oct	Nov	Dec	Jan	Feb	Mar	Apr	May	June
Planned	\$19.37	\$19.37	\$19.37	\$19.37	\$19.37	\$19.37	\$19.37	\$19.37	\$19.37	\$19.37	\$19.37	\$19.37
Actual	\$21.63	\$17.93	\$21.37	\$18.26								
% of plan	112%	93%	110%	94%	0%	0%	0%	%	0%	0%	0%	0%
Expenditures	July	Aug	Sept	Oct	Nov	Dec	Jan	Feb	Mar	Apr	May	June
Planned	\$52,829	\$105,658	\$158,487	\$211,315	\$264,144	\$316,973	\$369,802	\$422,631	\$475,460	\$528,288	\$581,117	\$686,775
Actual	\$75,265	\$124,445	\$186,719	\$342,122								
% of plan	142%	118%	118%	162%	0%	0%	0%	0%	0%	0%	0%	0%

WIA Adult/Dislocated Worker OJT/WEX PY09

WIA Adult 1-B	July	Aug	Sept	Oct	Nov	Dec	Jan	Feb	Mar	Apr	May	June
OJT-Planned	2	4	6	8	10	12	14	16	18	20	22	24
OJT-Actual	5	8	12	13								
% of Plan	250%	200%	200%	163%	0%	0%	0%	0%	0%	0%	0%	0%
OJT-Avg wage-Planned	\$12.00	\$12.00	\$12.00	\$12.00	\$12.00	\$12.00	\$12.00	\$12.00	\$12.00	\$12.00	\$12.00	\$12.00
OJT-Avg wage-Actual	\$12.55	\$11.75	\$12.02	\$11.79								
% of Plan	105%	98%	100%	98%	0%	0%	0%	0%	0%	0%	0%	0%
*WEX-Planned	2	4	6	8	10	12	14	16	18	20	22	22
*WEX-Actual	9	13	15	19								
% of Plan	450%	325%	250%	238%	0%	0%	0%	0%	0%	0%	0%	0%
WIA Dislocated Worker 1-B	July	Aug	Sept	Oct	Nov	Dec	Jan	Feb	Mar	Apr	May	June
OJT-Planned	2	4	6	8	10	12	14	16	18	20	22	27
OJT-Actual	10	12	12	13								
% of Plan	500%	300%	200%	163%	0%	0%	0%	0%	0%	0%	0%	0%
OJT-Avg wage-Planned	\$19.37	\$19.37	\$19.37	\$19.37	\$19.37	\$19.37	\$19.37	\$19.37	\$19.37	\$19.37	\$19.37	\$19.37
OJT-Avg wage-Actual	\$15.74	\$12.59	\$12.59	\$12.62								
% of Plan	81%	65%	65%	65%	0%	0%	0%	0%	0%	0%	0%	0%
*WEX-Planned	0	1	2	3	3	4	4	5	5	6	6	7
*WEX-Actual	6	6	7	9								
% of Plan	0%	600%	350%	300%	0%	0%	0%	0%	0%	0%	0%	0%

*WEX wage is \$8.55

Service Providers: Career Path Services and Employment Security

ARRA - WIA Adult/Dislocated Worker OJT/WEX PY09

WIA Adult ARRA	July	Aug	Sept	Oct	Nov	Dec	Jan	Feb	Mar	Apr	May	June
OJT-Planned	0	2	4	6	8	10	12	14	16	18	18	20
OJT-Actual	10	10	14	14								
% of Plan	0%	500%	350%	233%	0%	0%	0%	0%	0%	0%	0%	0%
OJT-Avg wage-Planned	\$12.00	\$12.00	\$12.00	\$12.00	\$12.00	\$12.00	\$12.00	\$12.00	\$12.00	\$12.00	\$12.00	\$12.00
OJT-Avg wage-Actual		\$10.78	\$11.13	\$11.13								
% of Plan	0%	90%	93%	93%	0%	0%	0%	0%	0%	0%	0%	0%
*WEX-Planned	2	4	6	8	10	12	14	16	18	20	22	25
*WEX-Actual	2	8	10	12								
% of Plan	100%	200%	167%	150%	0%	0%	0%	0%	0%	0%	0%	0%
WIA Dislocated Worker ARRA	July	Aug	Sept	Oct	Nov	Dec	Jan	Feb	Mar	Apr	May	June
OJT-Planned	0	9	14	19	23	28	32	37	41	46	51	57
OJT-Actual	7	7	9	10								
% of Plan	0%	78%	64%	53%	0%	0%	0%	0%	0%	0%	0%	0%
OJT-Avg wage-Planned	\$19.37	\$19.37	\$19.37	\$19.37	\$19.37	\$19.37	\$19.37	\$19.37	\$19.37	\$19.37	\$19.37	\$19.37
OJT-Avg wage-Actual		\$18.70	\$17.27	\$17.34								
% of Plan	0%	97%	89%	90%	0%	0%	0%	0%	0%	0%	0%	0%
*WEX-Planned	0	2	3	4	5	6	7	8	9	12	14	15
*WEX-Actual		0	1	2								
% of Plan	0%	0%	33%	50%	0%	0%	0%	0%	0%	0%	0%	0%

*WEX wage is \$8.55

Service Providers: Career Path Services and Employment Security

Next Generation Zone Workforce Investment Act - Youth Program PY09

(Carry-In:)	237	237	237	237	237	237	237	237	237	237	237	237
Total Participants	July	Aug	Sept	Oct	Nov	Dec	Jan	Feb	Mar	Apr	May	June
Total Served - Planned	264	289	314	339	364	379	394	409	424	434	444	450
Total Served - Actual	252	263	303	323								
	95%	91%	96%	95%	0%	0%	0%	0%	0%	0%	0%	0%
Not Low Income (5% Max)	5	9	9	8								
% of Total Served	1.9%	3.1%	2.9%	2.4%	0.0%	0.0%	0.0%	0.0%	0.0%	0.0%	0.0%	0.0%
New Registrants Planned	25	50	75	100	125	140	155	170	185	195	205	211
New Registrants Actual	15	26	62	83								
% of plan	60%	52%	83%	83%	0%	0%	0%	0%	0%	0%	0%	0%
Exits	July	Aug	Sept	Oct	Nov	Dec	Jan	Feb	Mar	Apr	May	June
Total Exits Planned	25	50	75	100	125	147	169	193	213	233	255	270
Total Exits (Actuals - Neutrals)	1	12	27	45								
% of plan	4%	24%	36%	45%	0%	0%	0%	0%	0%	0%	0%	0%
Employment Placement Planned	15	30	45	60	75	87	99	111	123	133	145	150
Employment Placement Actual	1	10	19	36								
% of plan	7%	33%	42%	60%	0%	0%	0%	0%	0%	0%	0%	0%
% of Total Exits Employed	0%	0%	0%	0%	0%	0%	0%	0%	0%	0%	0%	0%
Other Positive Exits Planned	5	11	16	22	27	33	38	44	49	54	59	66
Other Positive Exits Actual	0	2	7	9								
% of plan	0%	18%	44%	41%	0%	0%	0%	0%	0%	0%	0%	0%
Non-Positive Exits Planned	4	9	13	18	22	27	31	36	40	45	49	54
Non-Positive Exits Actual	0	0	1	2								
Neutral Exits	0	0	0	0								
Wage at Placement	July	Aug	Sept	Oct	Nov	Dec	Jan	Feb	Mar	Apr	May	June
Young Youth-Planned	\$9.40	\$9.40	\$9.40	\$9.40	\$9.40	\$9.40	\$9.40	\$9.40	\$9.40	\$9.40	\$9.40	\$9.40
Actual	\$0.00	\$11.13	\$10.31	\$9.75								
% of plan	0%	118%	110%	104%	0%	0%	0%	0%	0%	0%	0%	0%
Older Youth-Planned	\$10.75	\$10.75	\$10.75	\$10.75	\$10.75	\$10.75	\$10.75	\$10.75	\$10.75	\$10.75	\$10.75	\$10.75
Actual	\$11.00	\$11.16	\$11.70	\$10.26								
% of plan	102%	104%	109%	95%	0%	0%	0%	0%	0%	0%	0%	0%
Expenditures	July	Aug	Sept	Oct	Nov	Dec	Jan	Feb	Mar	Apr	May	June
Planned	\$92,341	\$184,682	\$277,023	\$369,364	\$461,705	\$554,046	\$646,387	\$738,728	\$831,069	\$923,410	\$1,015,751	\$1,159,000
Actual	\$110,101	\$162,482	\$194,634	\$252,255								
% of plan	119%	88%	70%	68%	0%	0%	0%	0%	0%	0%	0%	0%

	Targets	Actual	Over/Under
In-School Youth	40%	37%	-3%
Out-of-School Youth	60%	63%	3%
Younger Youth (14-18)	60%	60%	0%
Older Youth(19-21)	40%	40%	0%
Not-Low Income - Max of	4%	3%	-1%

Service Providers: Career Path Services, Educational Service District 101, Goodwill Industries of the Inland NW

ARRA - Next Generation Zone Phase II – 2009

Total Participants	May	June	July	Aug	Sept	Oct	Nov
Total Served - Planned	170	345	406	406	406	500	
Total Served - Actual	53	229	421	479	461	464	
	31%	66%	104%	118%	114%	93%	0%
Not Low Income (5% Max)	0	1	4	4	3	8	
% of Total Served	0%	0%	1%	1%	1%	2%	0%
New Registrants Planned	170	345	406	500	500	500	
New Registrants Actual	53	229	413	479	461	464	
% of plan	31%	66%	102%	96%	92%	93%	0%
WEX	May	June	July	Aug	Sept	Oct	Nov
*WEX-Planned				423	423	423	
*WEX-Actual	3	101	230	420	489	507	
% of Plan	0%	0%	0%	99%	116%	120%	0%
Exits	May	June	July	Aug	Sept	Oct	Nov
Total Exits Planned	0	0	0	134	500	500	
Total Exits (Actuals - Neutrals)	0	0	0	10	377	378	
% of plan	0%	0%	0%	7%	75%	76%	0%
Employment Placement Planned	0	0	0	0	0	0	0
Employment Placement Actual	0	0	0	1	29	31	
% of plan	0%	0%	0%	0%	0%	0%	0%
% of Total Exits Employed	0%	0%	0%	10%	8%	8%	0%
Other Positive Exits Planned	0	0	0	288	288	288	
Other Positive Exits Actual	0	0	0	270	270	270	
% of plan	0%	0%	0%	94%	94%	94%	0%
Non-Positive Exits Planned				77	77	77	
Non-Positive Exits Actual	0	0	0	0	62	60	
Neutral Exits	0	0	0	0	1	1	
Expenditures	May	June	July	Aug	Sept	Oct	Nov
Planned	\$215,000	\$495,000	\$825,000	\$1,150,000	\$1,480,000	\$1,490,000	\$ 1,500,000
Actual	\$49,680	\$123,403	\$568,818	\$875,928	\$1,195,248	\$1,424,100	
% of plan	23%	25%	69%	76%	81%	96%	0%

* Targets have not been established for some categories however, progress will be reported out at GMAP

	Targets	Actual	Over/Under
In-School Youth	40%	44%	4%
Out-of-School Youth	60%	56%	-4%
Younger Youth (14-18)	60%	52%	-8%
Older Youth(19-21)	40%	48%	8%
Not-Low Income - Max of	4%	0%	-4%

Next Generation Zone WIA Youth & ARRA OJT/WEX PY09

WIA Youth 1-B	July	Aug	Sept	Oct	Nov	Dec	Jan	Feb	Mar	Apr	May	June
OJT-Planned	0	0	1	1	1	2	3	4	5	5	5	5
OJT-Actual	2	2	2	3								
% of Plan	0%	0%	200%	300%	0%	0%	0%	0%	0%	0%	0%	0%
OJT-Avg wage-Planned	\$10.00	\$10.00	\$10.00	\$10.00	\$10.00	\$10.00	\$10.00	\$10.00	\$10.00	\$10.00	\$10.00	\$10.00
OJT-Avg wage-Actual		\$12.50	\$12.50	\$11.33								
% of Plan	0%	125%	125%	113%	0%	0%	0%	0%	0%	0%	0%	0%
*WEX-Planned	0	10	30	50	60	70	80	100	110	120	130	133
*WEX-Actual		52	56	61								
% of Plan	0%	520%	187%	122%	0%	0%	0%	0%	0%	0%	0%	0%

WIA Youth ARRA	July	Aug	Sept	Oct	Nov	Dec	Jan	Feb	Mar
OJT-Planned	0	1	1	1	1	1	1	1	1
OJT-Actual	1	1	1	1					
% of Plan	0%	100%	100%	100%	0%	0%	0%	0%	0%
OJT-Avg wage-Planned	\$10.00	\$10.00	\$10.00	\$10.00	\$10.00	\$10.00	\$10.00	\$10.00	\$10.00
OJT-Avg wage-Actual		\$9.00	\$9.00	\$9.00					
% of Plan	0%	90%	90%	90%	0%	0%	0%	0%	0%
*WEX-Planned	200	250	350	406	406	406			
*WEX-Actual	428	420	489	507					
% of Plan	214%	168%	140%	125%	0%	0%	0%	0%	0%

*WEX wage is \$8.55

Trade Act Assistance (TAA)

Trade Act Assistance

TAA Fiscal 09 Wage Performance

10/01/09 to 09/30/10

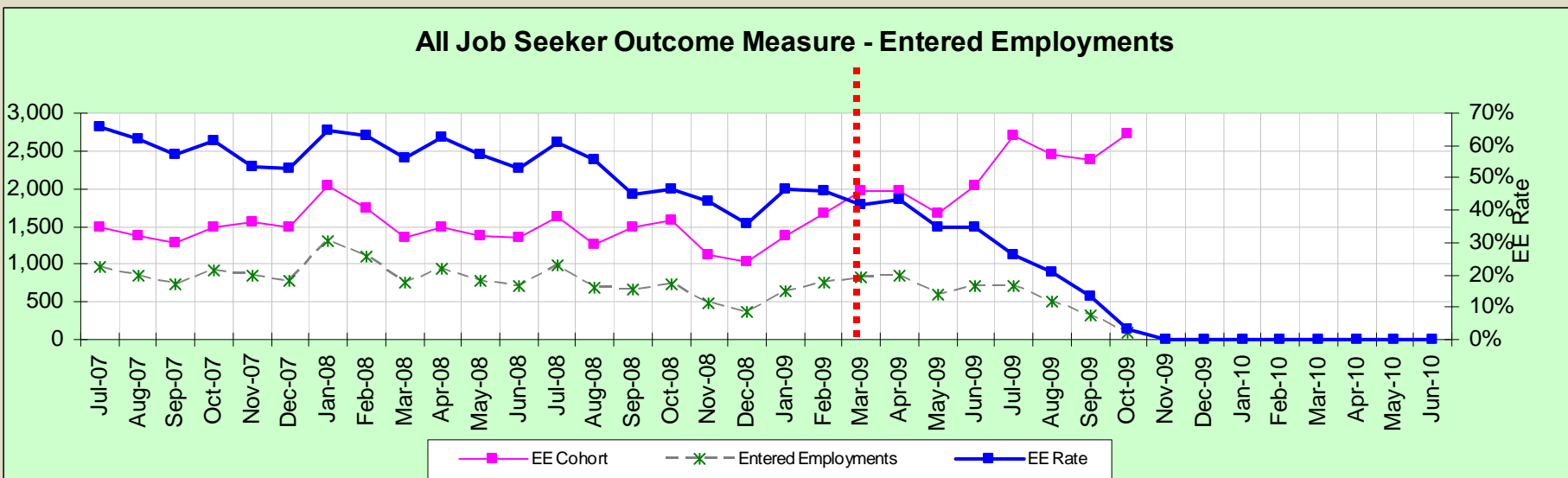
	Oct '09	Nov '09	Dec '09	Jan '10	Feb '10	Mar '10	Apr '10	May '10	Jun '10	Jul '10	Aug '10	Sep '10
Total Served	476											
Total Exited	3											
Employed at exit	3											
Current on Board	473											
Pre-wage average	\$20.21											
Post-wage average	\$19.35											
Wage recovery goal	86%	86%	86%	86%	86%	86%	86%	86%	86%	86%	86%	86%
Actual recovery %	96%											
Established Training Account	99											
Attained recognized credentials	0											
Training related placements	0											
Average weeks on program	9											
Types of training												
Business Services	0											
Healthcare	0											
Manufacturing/Aerospace	0											
Placements	Oct '09	Nov '09	Dec '09	Jan '10	Feb '10	Mar '10	Apr '10	May '10	Jun '10	Jul '10	Aug '10	Sep '10
Employed Exits	3											
Other' Exits	0											
Total Exits	3											
Cumulative Percent Placed	100%											
Goal	79%	79%	79%	79%	79%	79%	79%	79%	79%	79%	79%	79%
Co-Enrolls	Oct '09	Nov '09	Dec '09	Jan '10	Feb '10	Mar '10	Apr '10	May '10	Jun '10	Jul '10	Aug '10	Sep '10
TAA	489											
Co-en	21											
% Co-en	4%											

Performance Outcomes Spokane

Spokane

All Job Seekers Entered Employment

		Jul	Aug	Sep	Oct	Nov	Dec	Jan	Feb	Mar	Apr	May	Jun	Total	Goal
EE Cohort	PY09	2,693	2,444	2,393	2,735									10,265	
	PY08	1,618	1,250	1,496	1,575	1,126	1,039	1,381	1,664	1,975	1,959	1,674	2,047	18,804	
Entered Employments	PY09	709	505	325	87									1,626	
	PY08	982	694	668	736	481	370	645	761	828	847	584	709	8,305	
EE Rate	PY09	26.3%	20.7%	13.6%	3.2%									15.8%	60.0%
	PY08	60.7%	55.5%	44.7%	46.7%	42.7%	35.6%	46.7%	45.7%	41.9%	43.2%	34.9%	34.6%	44.2%	60.0%



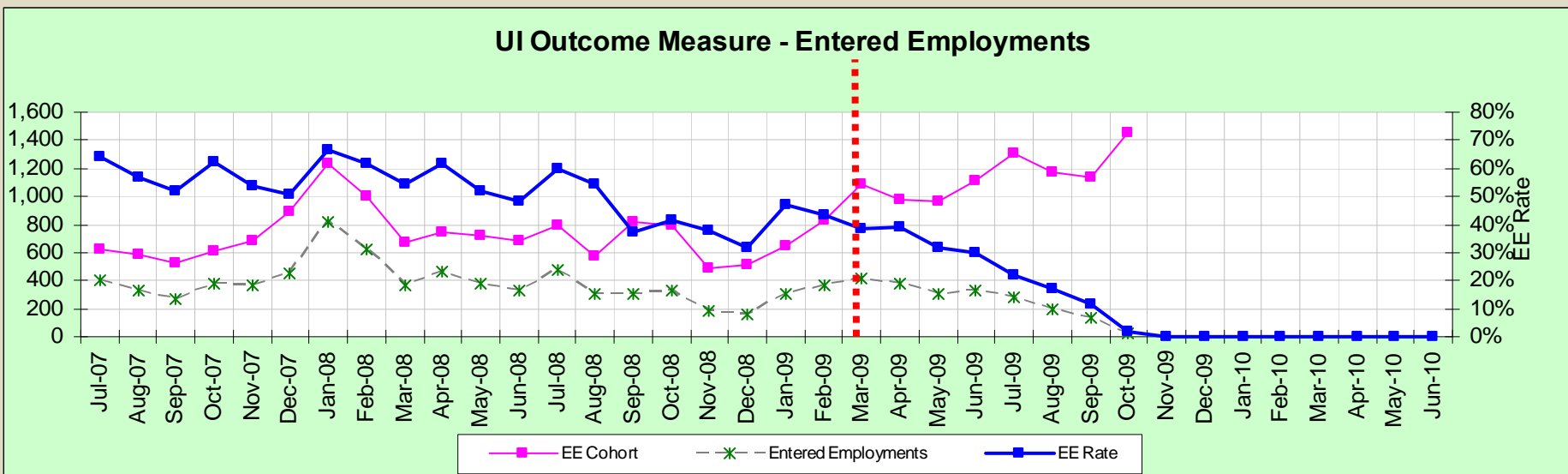
46.8% EE Rate for data finalized through March 2009

Goal	Actual	Difference
60.0%	46.8%	-13.2%

Spokane

UI Entered Employment

		Jul	Aug	Sep	Oct	Nov	Dec	Jan	Feb	Mar	Apr	May	Jun	Total	Goal
EE Cohort	PY09	1,309	1,174	1,139	1,457									5,079	
	PY08	798	570	816	789	492	515	651	834	1,084	980	959	1,114	9,602	
Entered Employments	PY09	284	198	130	23									635	
	PY08	479	311	303	328	185	163	305	362	416	383	306	332	3,873	
EE Rate	PY09	21.7%	16.9%	11.4%	1.6%									12.5%	60.0%
	PY08	60.0%	54.6%	37.1%	41.6%	37.6%	31.7%	46.9%	43.4%	38.4%	39.1%	31.9%	29.8%	40.3%	60.0%



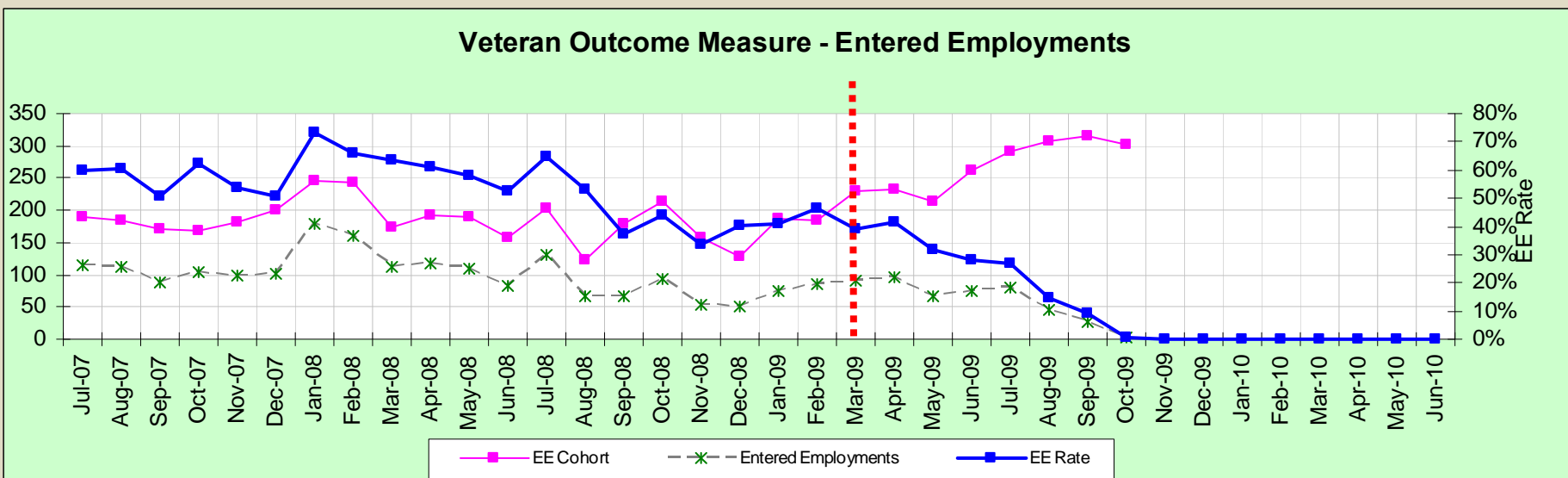
43.5% EE Rate for data finalized through March 2009

Goal	Actual	Difference
60.0%	43.5%	-16.5%

Spokane

Veteran Entered Employment

		Jul	Aug	Sep	Oct	Nov	Dec	Jan	Feb	Mar	Apr	May	Jun	Total	Goal
EE Cohort	PY09	291	308	314	303									1,216	
	PY08	202	124	179	215	158	129	186	184	230	232	213	261	2,313	
Entered Employments	PY09	79	45	28	2									154	
	PY08	131	66	67	94	53	52	76	85	90	96	68	74	952	
EE Rate	PY09	27.1%	14.6%	8.9%	0.7%									12.7%	60.0%
	PY08	64.9%	53.2%	37.4%	43.7%	33.5%	40.3%	40.9%	46.2%	39.1%	41.4%	31.9%	28.4%	41.2%	60.0%



Goal	Actual	Difference
60.0%	44.4%	-15.6%

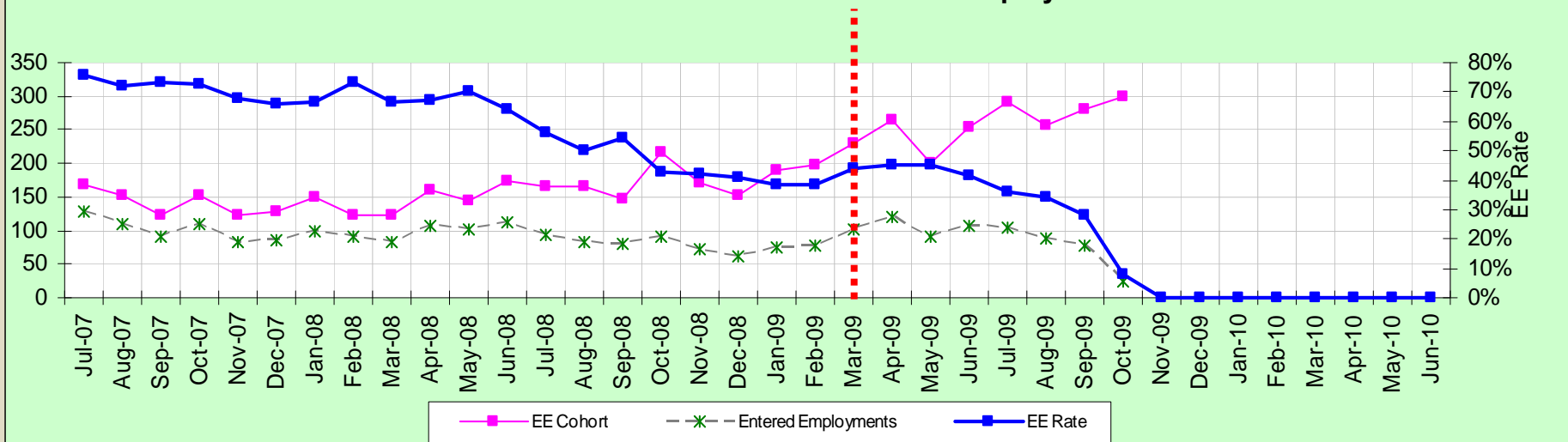
44.4% EE Rate for data finalized through March 2009

Spokane

WorkFirst Entered Employment

		Jul	Aug	Sep	Oct	Nov	Dec	Jan	Feb	Mar	Apr	May	Jun	Total	Goal
EE Cohort	PY09	291	256	280	299									1,126	
	PY08	166	165	148	216	172	152	191	199	230	264	200	254	2,357	
Entered Employments	PY09	105	88	78	24									295	
	PY08	93	83	80	92	72	62	74	77	101	119	90	106	1,049	
EE Rate	PY09	36.1%	30.2%	30.5%	8.6%									26.2%	69.0%
	PY08	56.0%	50.3%	54.1%	42.6%	41.9%	40.8%	38.7%	38.7%	43.9%	45.1%	45.0%	41.7%	44.5%	67.0%

WorkFirst Outcome Measure - Entered Employments



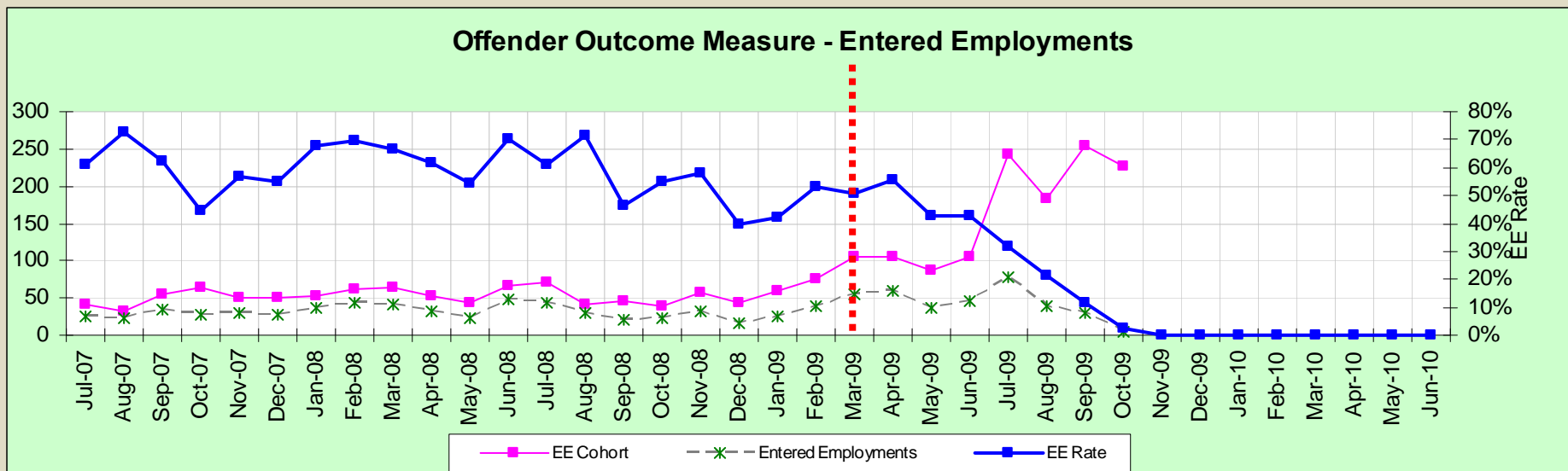
44.8% EE Rate for data finalized through March 2009

Goal	Actual	Difference
67.0%	44.8%	-22.2%

Spokane

Offender Entered Employment

		Jul	Aug	Sep	Oct	Nov	Dec	Jan	Feb	Mar	Apr	May	Jun	Total	Goal
EE Cohort	PY09	242	183	255	226									906	
	PY08	72	42	45	40	57	43	59	75	106	106	86	105	836	
Entered Employments	PY09	77	39	29	5									150	
	PY08	44	30	21	22	33	17	25	40	54	59	37	45	427	
EE Rate	PY09	31.8%	21.3%	11.4%	2.2%									16.6%	65.0%
	PY08	61.1%	71.4%	46.7%	55.0%	57.9%	39.5%	42.4%	53.3%	50.9%	55.7%	43.0%	42.9%	51.1%	60.0%



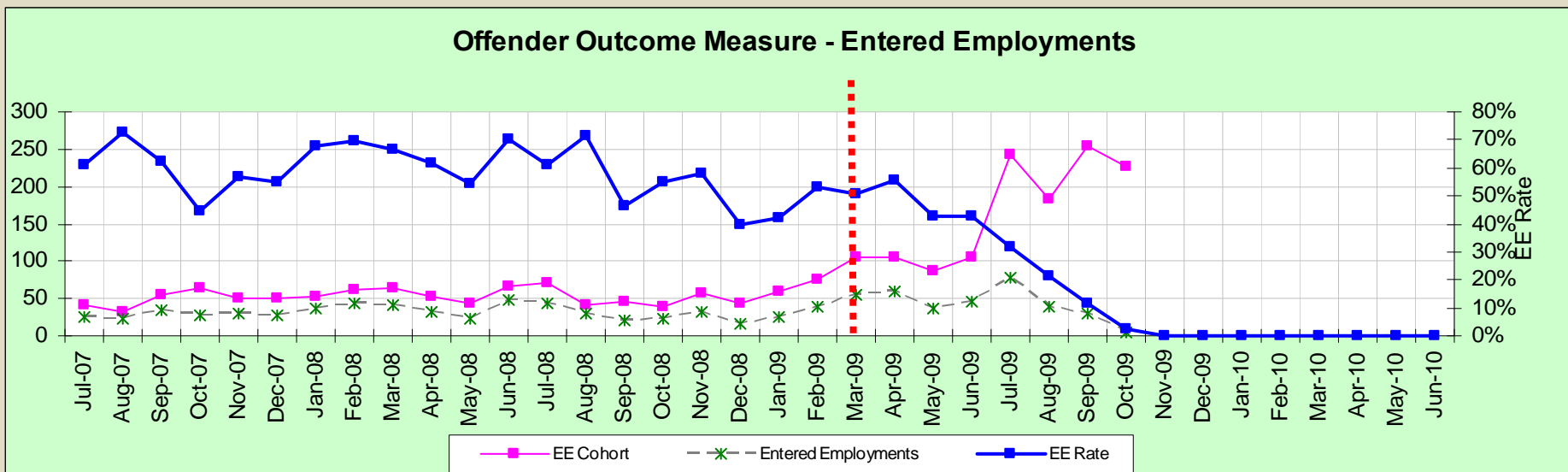
53% EE Rate for data finalized through March 2009

Goal	Actual	Difference
65.0%	53.0%	-12.0%

Spokane

MSFW Entered Employment

		Jul	Aug	Sep	Oct	Nov	Dec	Jan	Feb	Mar	Apr	May	Jun	Total	Goal
EE Cohort	PY09	2	3	1	5									11	
	PY08	0	0	1	3	2	2	2	3	2	3	2	0	20	
Entered Employments	PY09	0	1	0	0									1	
	PY08	0	0	0	1	2	0	1	2	2	1	2	0	11	
EE Rate	PY09	0.0%	0.0%	0.0%	0.0%									9.1%	60.0%
	PY08	0.0%	0.0%	0.0%	0.0%	100.0%	0.0%	50.0%	66.7%	100.0%	33.3%	0.0%	0.0%	55.0%	60.0%



53.3% EE Rate for data finalized through March 2009

Goal	Actual	Difference
60.0%	53.3%	-6.7%

Thank You!

See you at the next GMAP ~

December 18, 2009