



# Spokane's Labor Market

*Presented by*

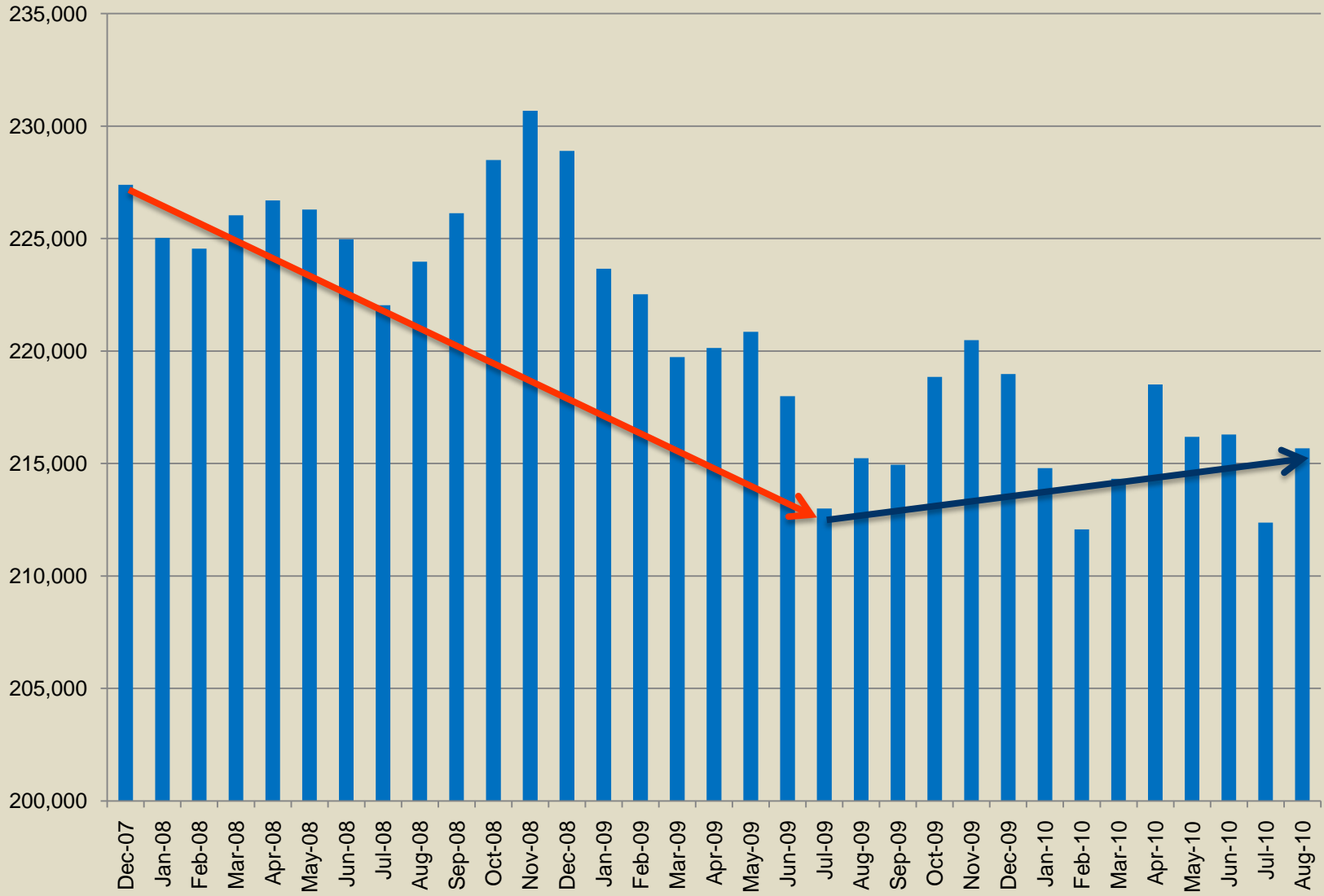
**Washington State  
Employment Security Department**

Labor Market and Economic Analysis



**Doug Tweedy  
Regional Labor Economist  
October 2010**

# Spokane Employment



# Spokane Unemployment

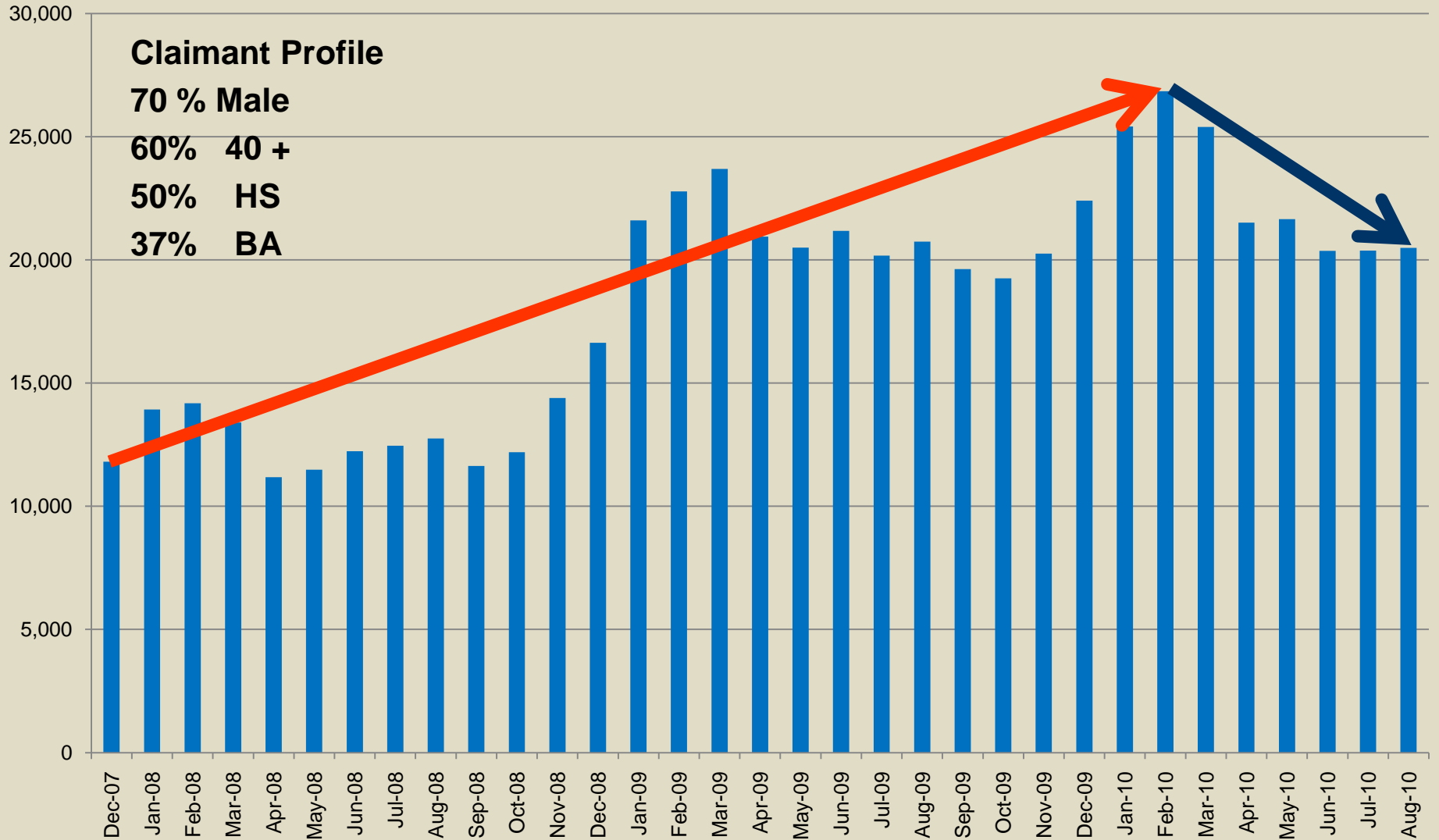
## Claimant Profile

70 % Male

60% 40 +

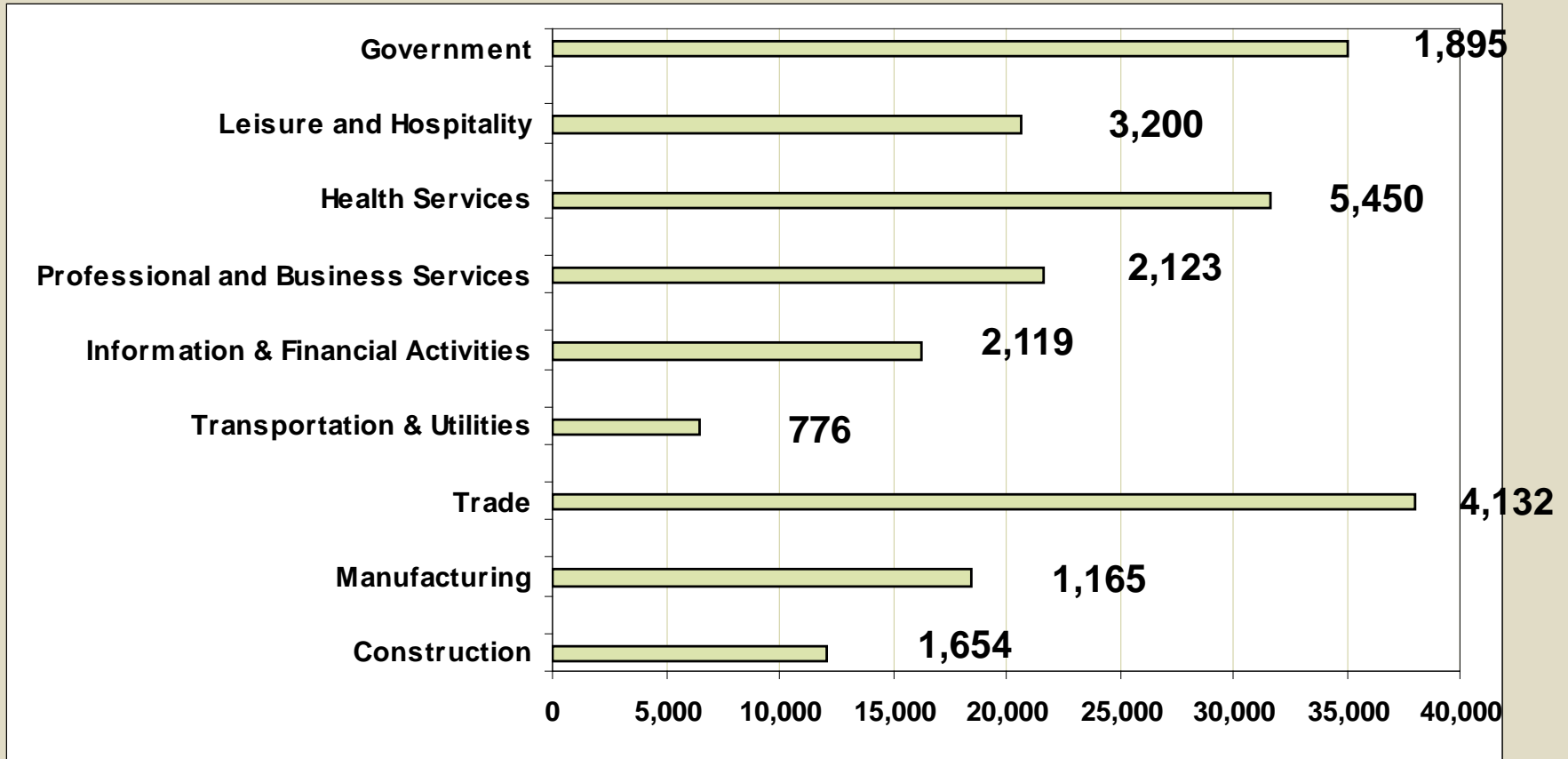
50% HS

37% BA

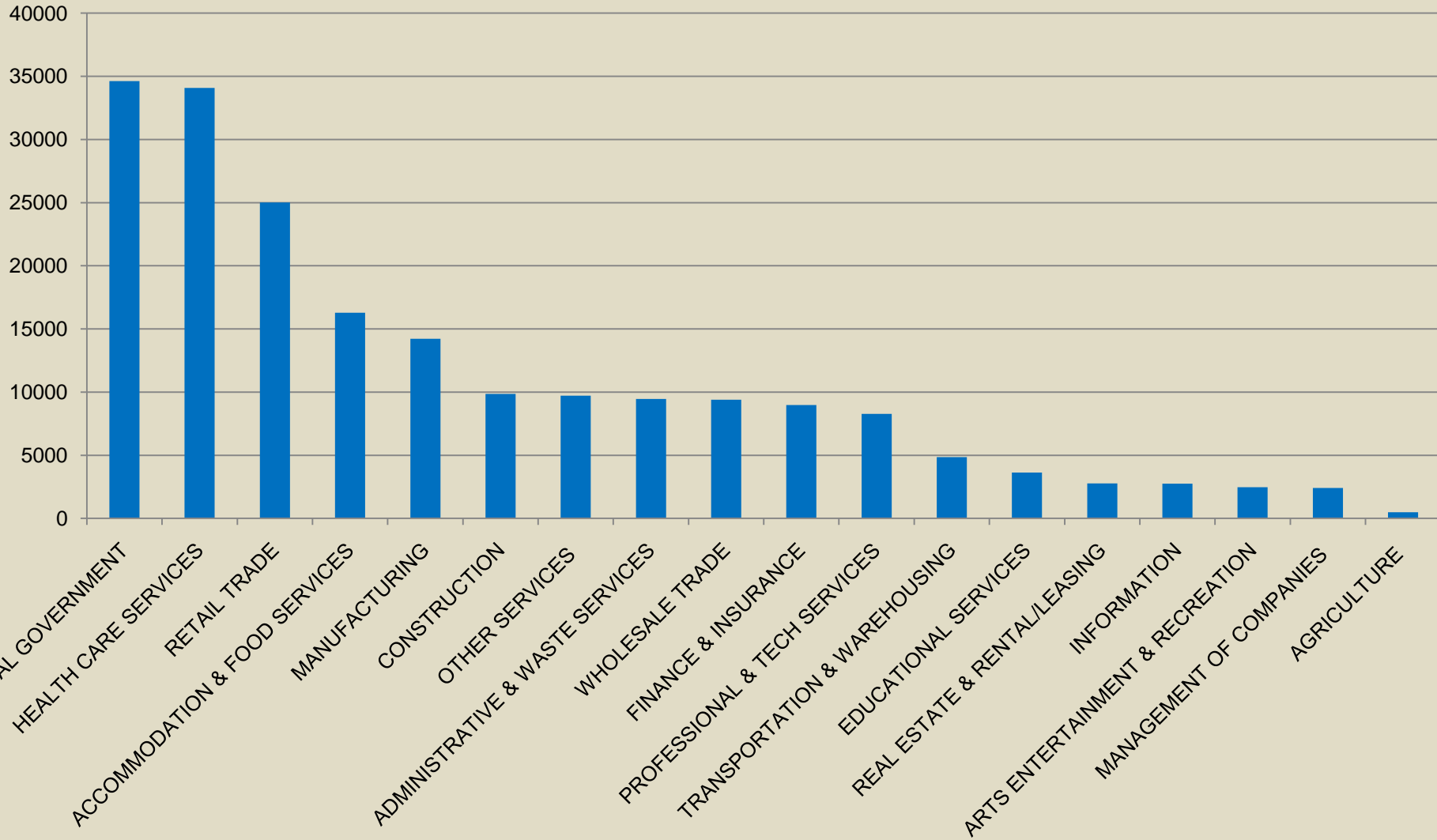


# Spokane MSA: New Hires

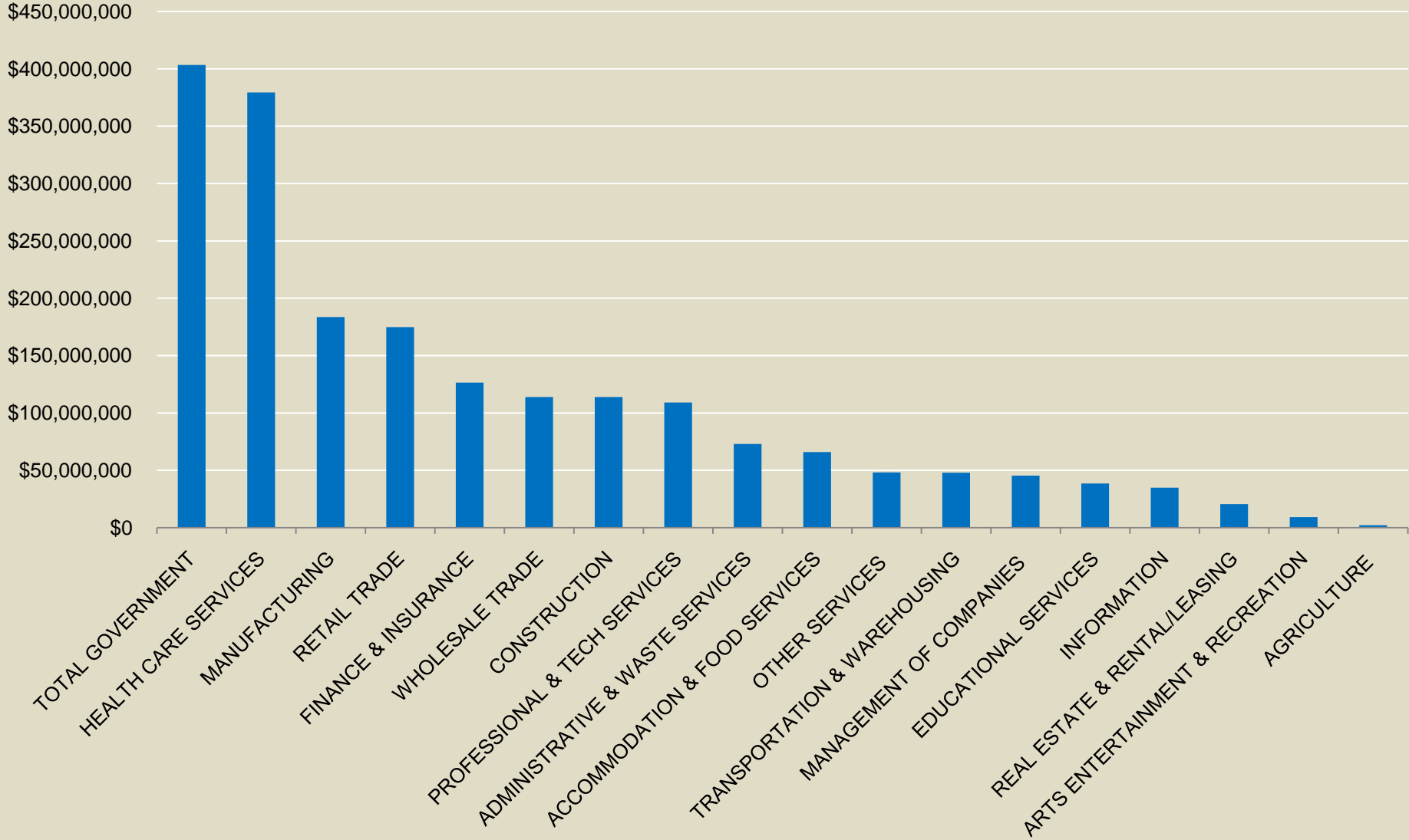
## April to June 2010



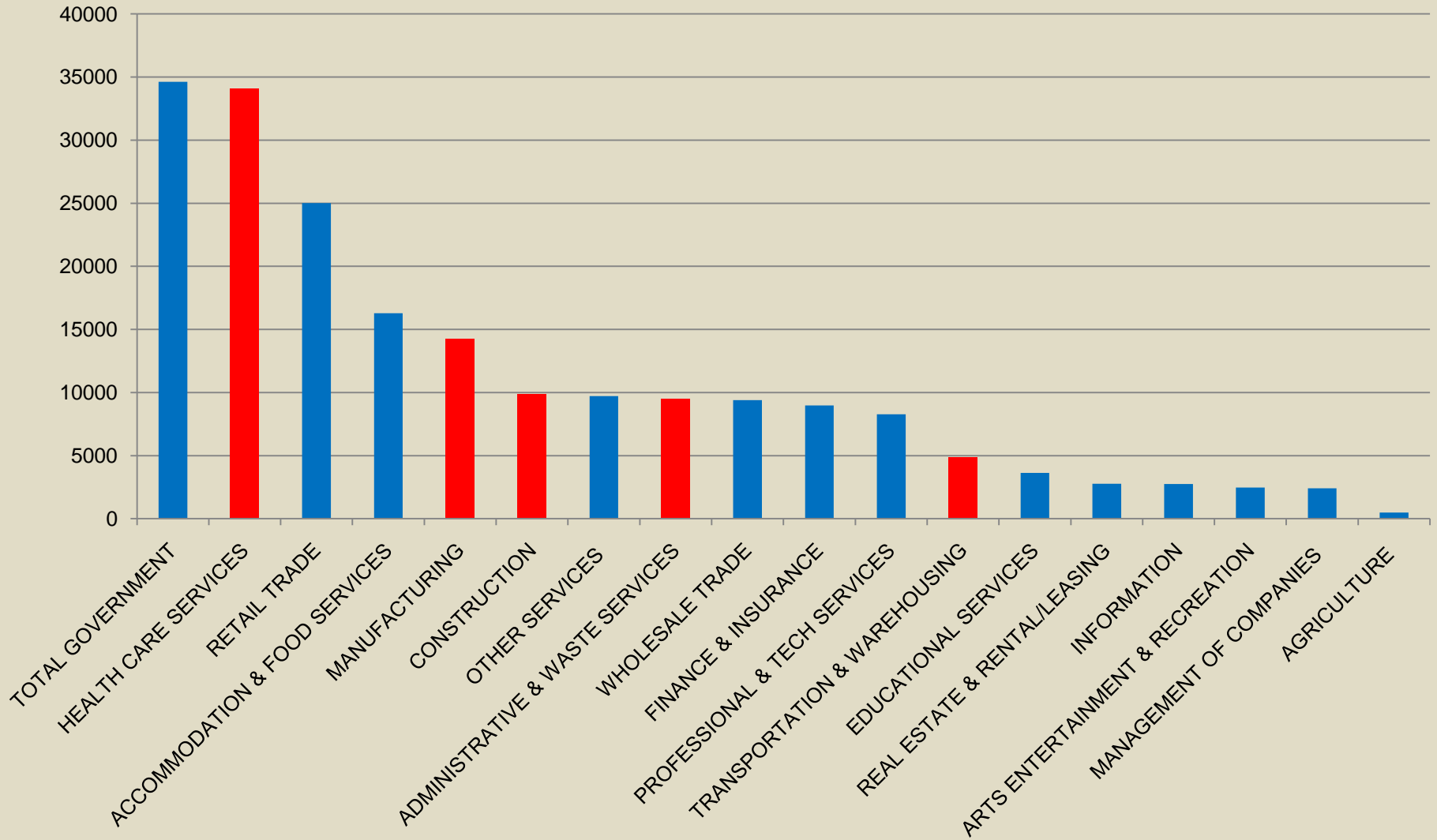
# Spokane Sector distribution by Employment



# Spokane Total Wages by Sector



# Spokane WDC Previous Cluster

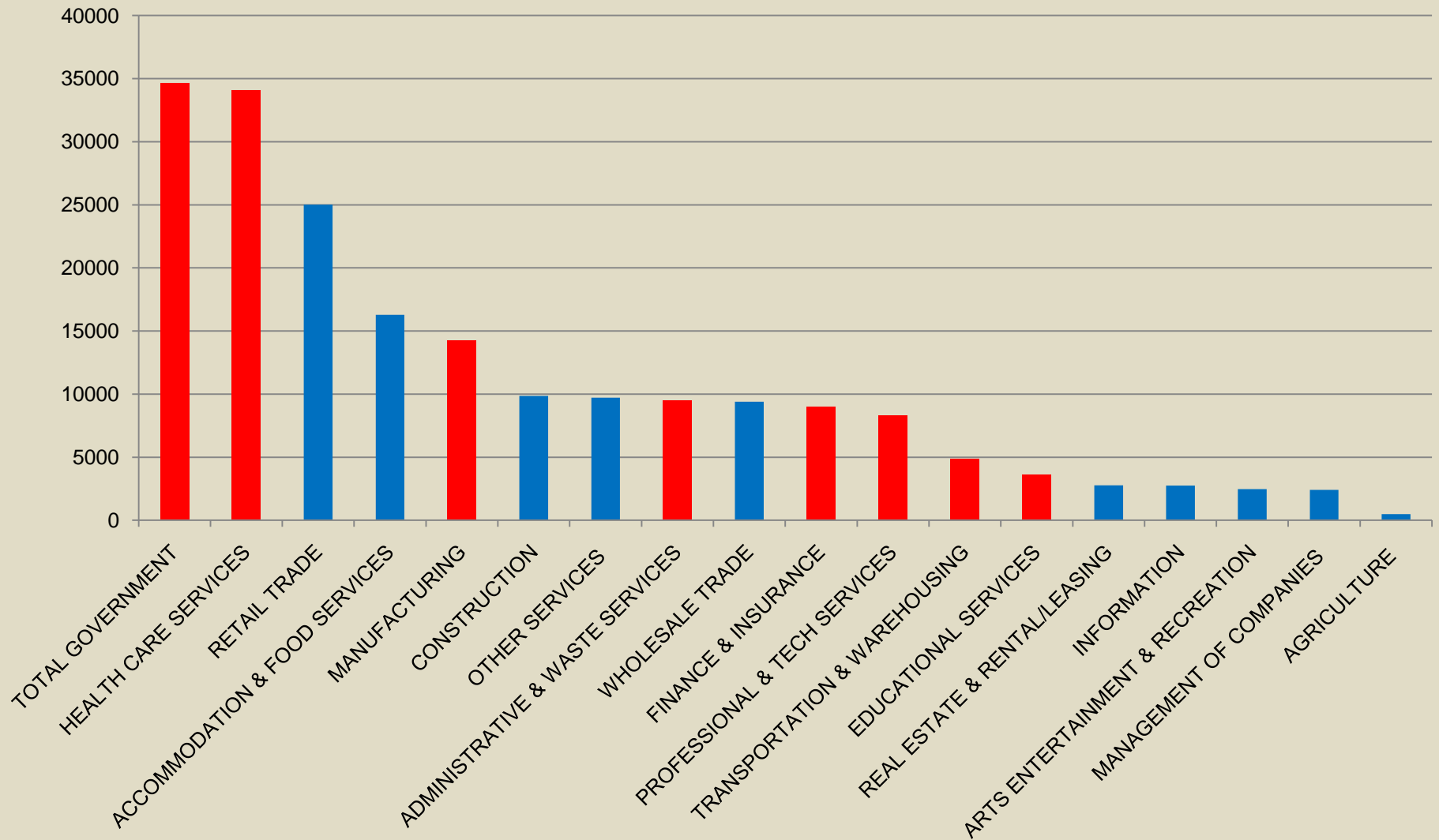


## *For your consideration*

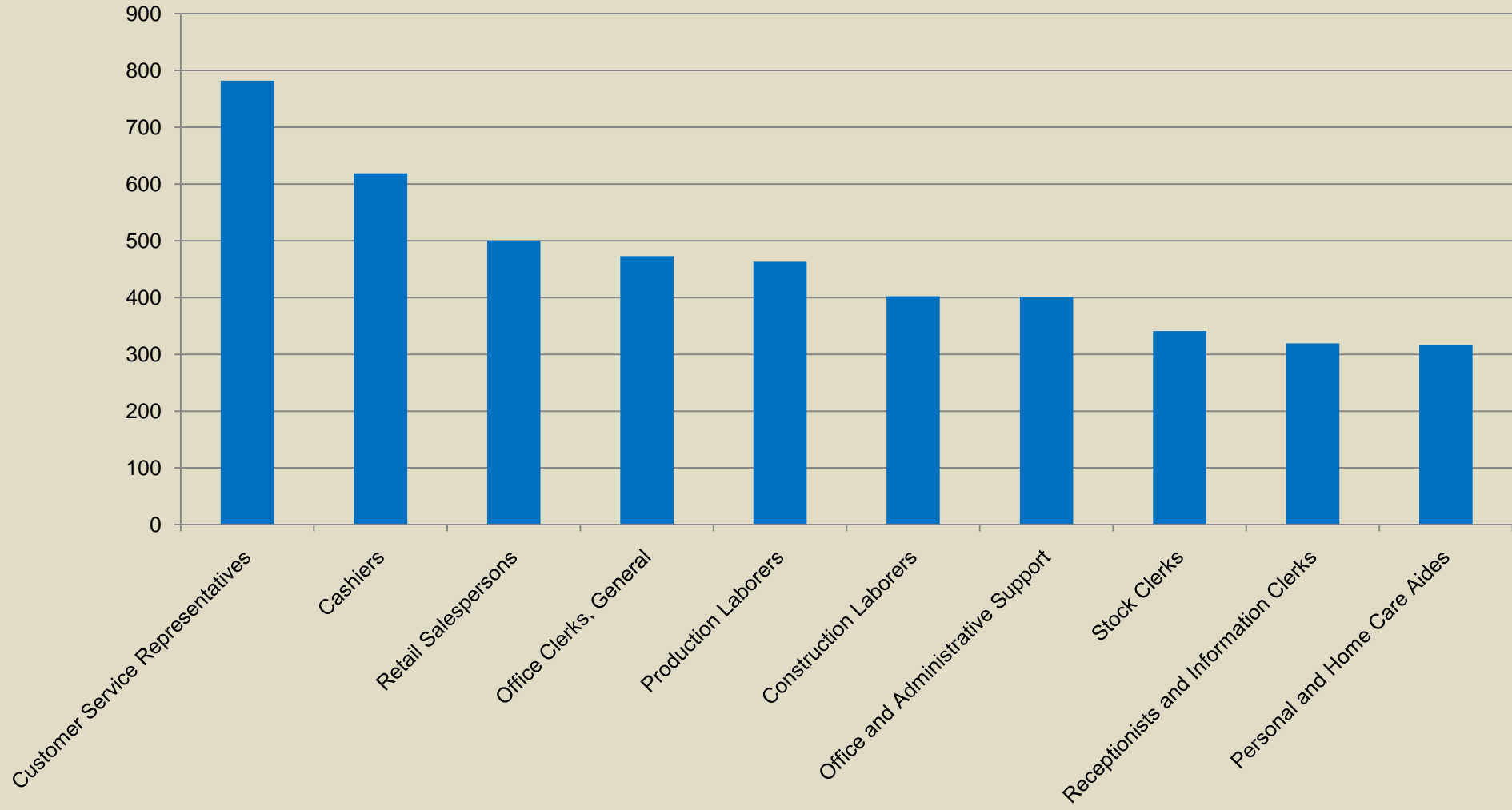
- **Construction**
  - **Manufacturing**
  - **Health Care**
  - **Transportation/ Warehousing**
  - **Business Services**
- **Health Care**
  - **Professional Scientific & Technical Services**
  - **Waste Management**
  - **Advanced Manufacturing**
  - **Transportation (Logistics & Distribution)**
  - **Energy**
  - **Finance/Insurance**
  - **Education Services**

Sector	Firms	New hires 2 <sup>nd</sup> quarter 2010	Wage	Retirement Impact
Health Care	1,143	2,450	\$40,985	20.2%
Professional Scientific & Technical Services	1,114	960	\$48,640	16.2%
Waste Management	90	43	\$36,789	13.2%
Advanced Manufacturing	263	990	\$47,982	16.8%
Transportation (Logistics & Distribution)	190	675	\$39,340	20.5%
Energy	10	*	*	*
Finance/Insurance	539	1,760	\$53,603	15.7%
Education Services	260	680	\$47,901	28.6%

# Spokane Recommended Sector focus



# Applicants at WorkSource



# Sectors to watch

## Professional, Scientific & Technical Services (210)

Computer , Engineering, Chemical techs, Office support, Sales reps, Writers, Assemblers, Testers, Maintenance, Laborers

## Waste Management, Remediation & Clean water (24)

Data Entry, Laborers, Maintenance, Diesel mechanics, Equipment operators

## Advanced Manufacturing (230)

Assemblers, Metal /Plastic/Composite workers, Electrical/Electronic workers, Industrial Tech & Office support

## Transportation (Aviation) (19)

Freight movers, Maintenance, Service techs, Reservation, Office support,

## Energy & Technology (Grid)

Construction laborers, Maintenance, Engineering techs, Office support, Equipment operators, Laborers

## Health Care (1,108)

Aides/orderlies, Billing /Posting clerks, Dental assistants, Med records techs, Insurance techs, Building maintenance,

## Military (142)

## Agriculture (90)

# Spring 2010 Job Vacancy Survey

**Vacancies increase 22 percent**

**Financial Operations, Computer, Mathematical, Education, Training, Health Care, Protective Service, Office/Admin, Transportation**

**Educational requirements for new vacancies: Certificates, Some college, AA**

**Wages for new vacancies: \$15 to \$25 range**

**New vacancies are shifting from small employers(<25) to bigger ones (>100)**