



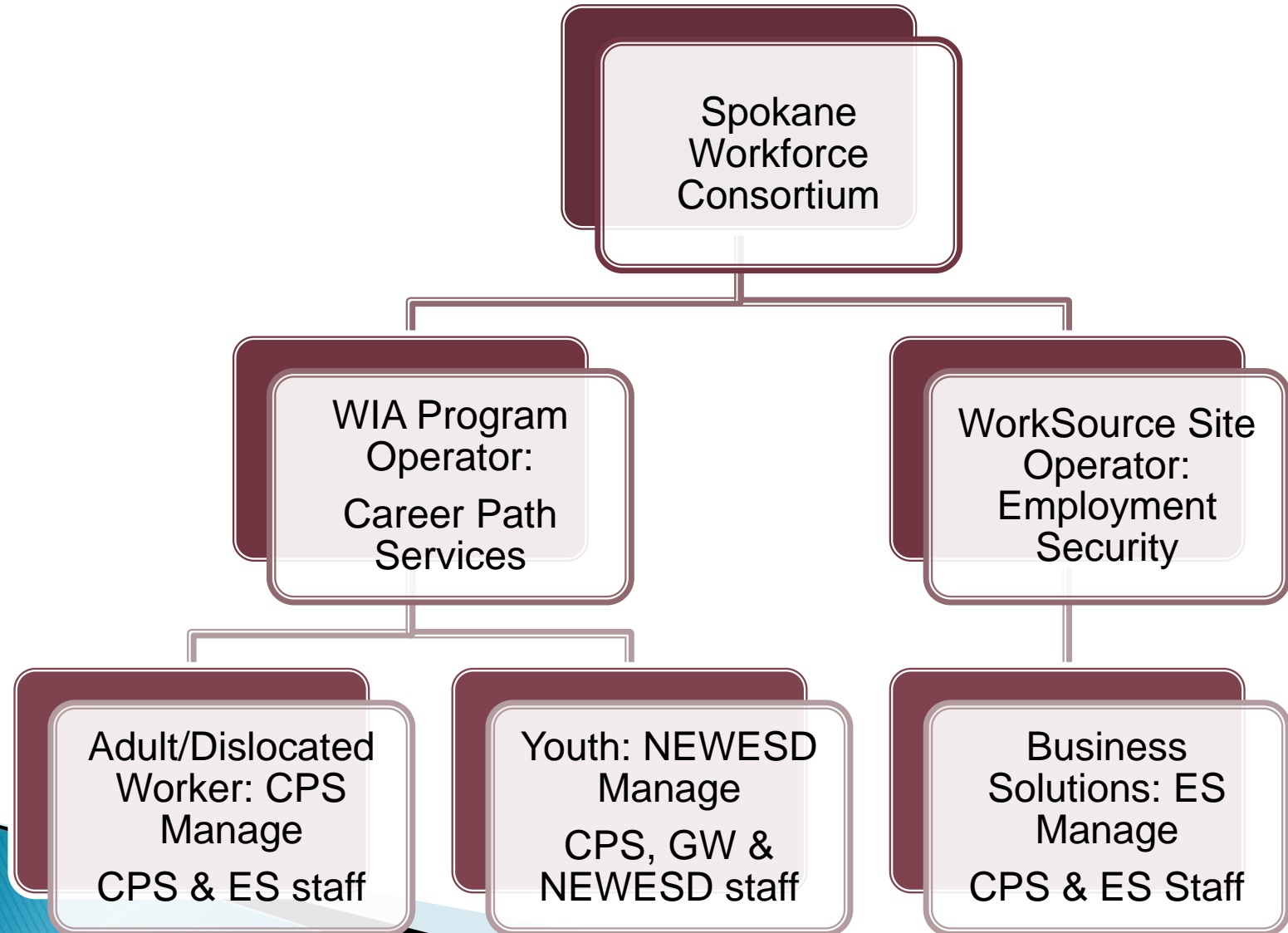
Workforce Investment Act PY09 Year in Review



Consortium Partners

- ▶ Career Path Services
- ▶ Employment Security Department
- ▶ Goodwill Industries of the Inland Northwest
- ▶ NorthEast Washington Educational Service
District 101

Layout of Consortium Roles:



WIA Adult/Dislocated Worker

▶ PY09 Results

	Low Income Adults	Dislocated Workers
◦ Total served:	516	578
◦ Total placed	162 (31%)	242 (42%)
◦ Average hourly wage	\$13.68	\$17.79
• (PY 08)	\$ 12.41	\$16.42

WIA Adult/DW Demographics

	Adult	D/W
▶ Total Served	516	578
◦ Female	295 (57%)	195 (34%)
◦ Male	221 (43%)	383 (66%)
◦ 22-29	187 (36%)	68 (12%)
◦ 30-54	268 (52%)	394 (68%)
◦ 55+	38 (7%)	109 (19%)
◦ Veterans	43 (8%)	100 (17%)
◦ TANF	57 (11%)	
◦ Food Stamps	344 (67%)	
◦ Offender	166 (32%)	

Industry Sector Results

	Average Wage	Placements
Manufacturing	\$17.88	61
Health Care	\$13.90	79
Business/Professional	\$15.88	75
Construction	\$17.52	29
Transportation/Logistics	\$19.60	60
Government/Education	\$16.44	27
Hospitality	\$14.51	64
Cross Sector	\$20.53	5

96% of all placement was in these sectors



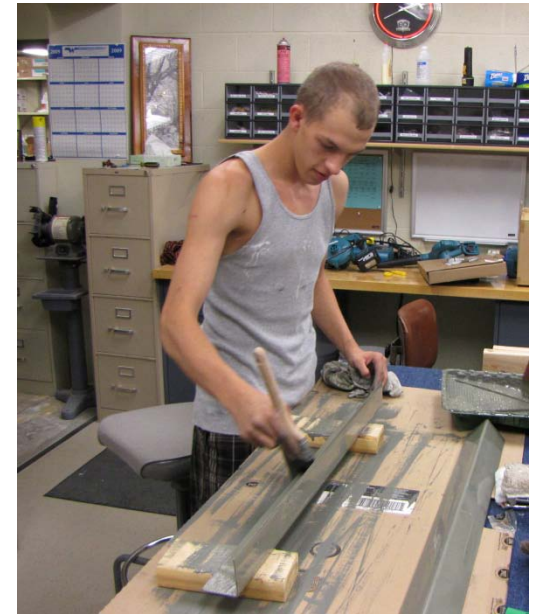
OJT-WEX RESULTS

	Adult	D/W
OJT Goal	24	29
OJT Actual	32	53
OJT Attainment	133%	183%
WEX Goal	22	10
WEX Actual	27	10
WEX Attainment	113%	100%



WIA Youth Services

- Over 2,000 youth received core services
- ARRA summer youth program served over 500
- Served 444 in intensive WIA title 1-B services
 - 255 16-18 at time of enrollment
 - 289 out of school youth
 - 234 females
 - 202 receiving public assistance
 - 65 minority (15%)
 - 119 offender
 - 53 pregnant/parenting
 - 45 disclosed disability
 - 41 homeless/runaway





WIA Youth Services

- PY09 Exits - 266
 - 152 employed exits
 - *Manufacturing (5)*
 - *Healthcare (44)*
 - *Business Services (22)*
 - *Hospitality (56)*
 - *Transportation (7)*
 - *Construction (3)*
 - *other clusters (15)*
 - 54 employability enhancements
 - 27 post secondary
- Students accessing the GED classroom: summer 09 (94), fall 09 (118), winter 10 (135), spring 10 (142)
 - 47 GED's/state diploma's attained





New Home, New Partners Youth One Stop

- In January 2010, WIA and the GED classroom moved into a new site just across the parking lot from WorkSource and formed a WorkSource campus.
- Goodwill's *GoodGuides* joined NextGenZone.
 - Mentoring for youth 13-17 with peer mentoring being part of this model. Goal is to assist youth in overcoming disadvantages & plan careers.
- NEWESD 101's *YouthBuild* joined NextGenZone.
 - Work with 18-24 year old low income young adults that do not have their high school diploma or GED attain this while gaining hands on skills training in the construction field.



Community Outreach & New Funding Streams

- Each of the WorkSource Specialists are assigned to schools around the county
- Staff participate in conferences, fairs, etc. to talk about our services and work readiness preparation
 - *ARRA* funding for summer youth employment program with the main emphasis on summer 2009
 - *Opportunity Internship Grant Program*
 - *Youth Health Care Academy*

One-Stop Operator Employment Security

Job Seekers

- Number Served 29,175
 - Male 17,275
 - Female 11,886
- Veterans 3,292
- Offenders 2,544
- Receiving TANF/
Public Assistance 7,256
- Limited English 653
- Workshop Attendance 3,497
- Used Resource Room 8,672

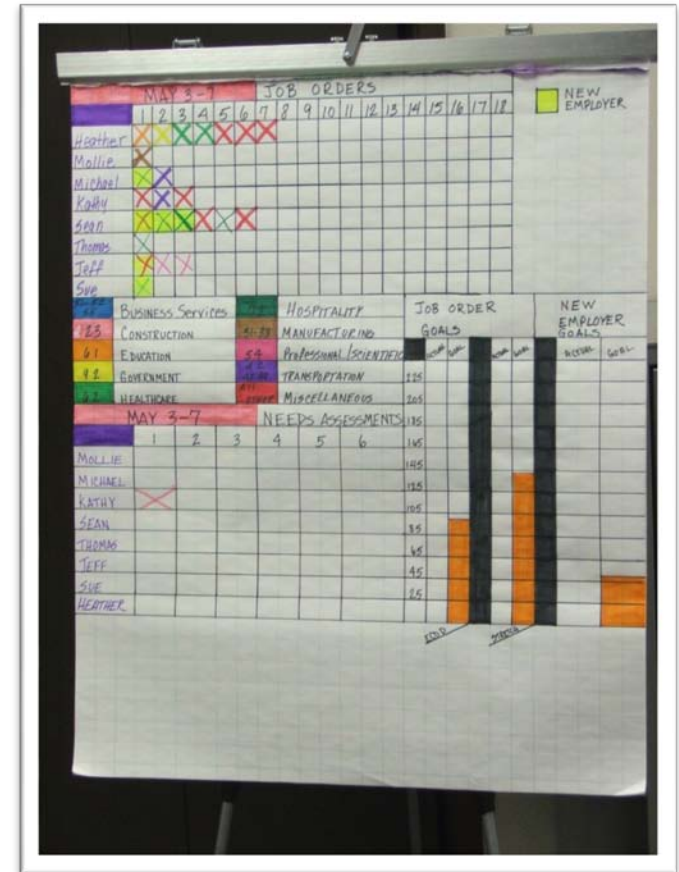
- Employment Placements 2,739



One-Stop Operator Employment Security

Employers

- Employers Served 675
- Job Orders 1771
- Fill Rate 19.7%
- 2-digit ONET Match (Average per Quarter) 49.5%
- Rapid Response
 - Affected employees 484
 - Applicants 57
 - Registered in WIA 12
 - Registered in TAA 42
 - Co-enrolled (WIA/TAA) 1



Thank you!

