



Spokane's Labor Market

Presented by

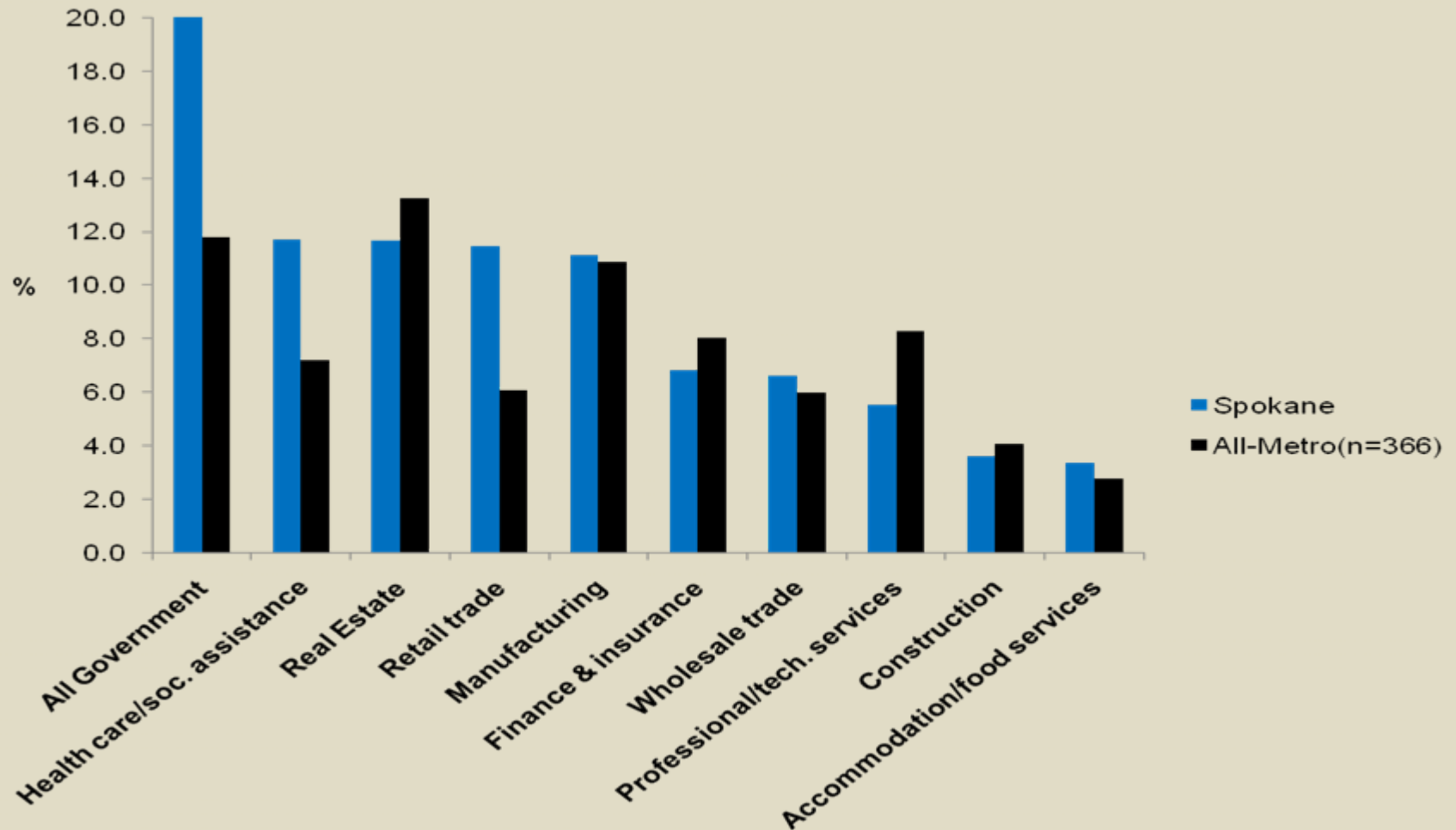
**Washington State
Employment Security Department**

Labor Market and Economic Analysis



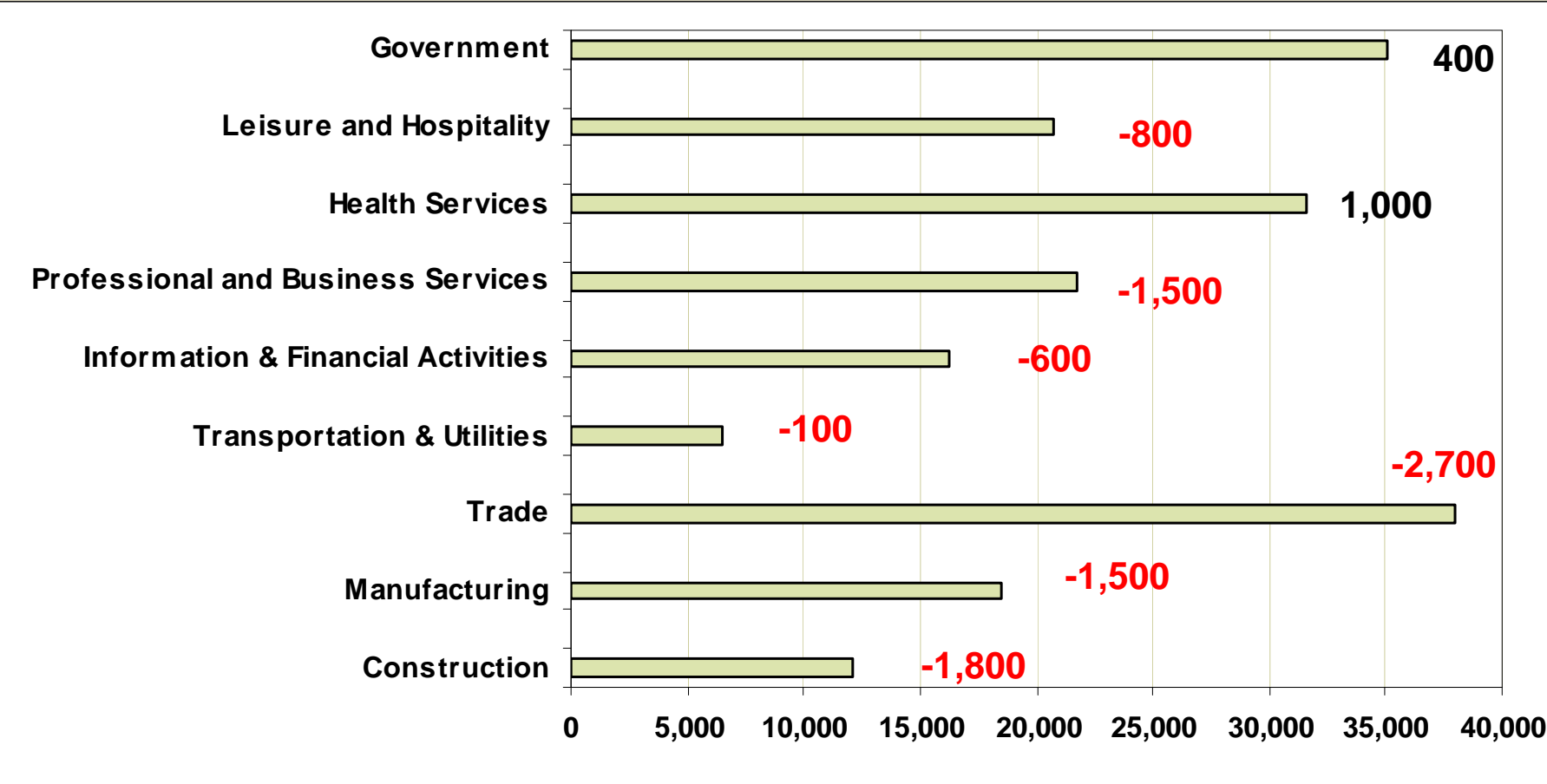
**Doug Tweedy
Regional Labor Economist
December 2009**

Industry shares of Spokane MSA 2008GDP



Spokane MSA Industry Employment

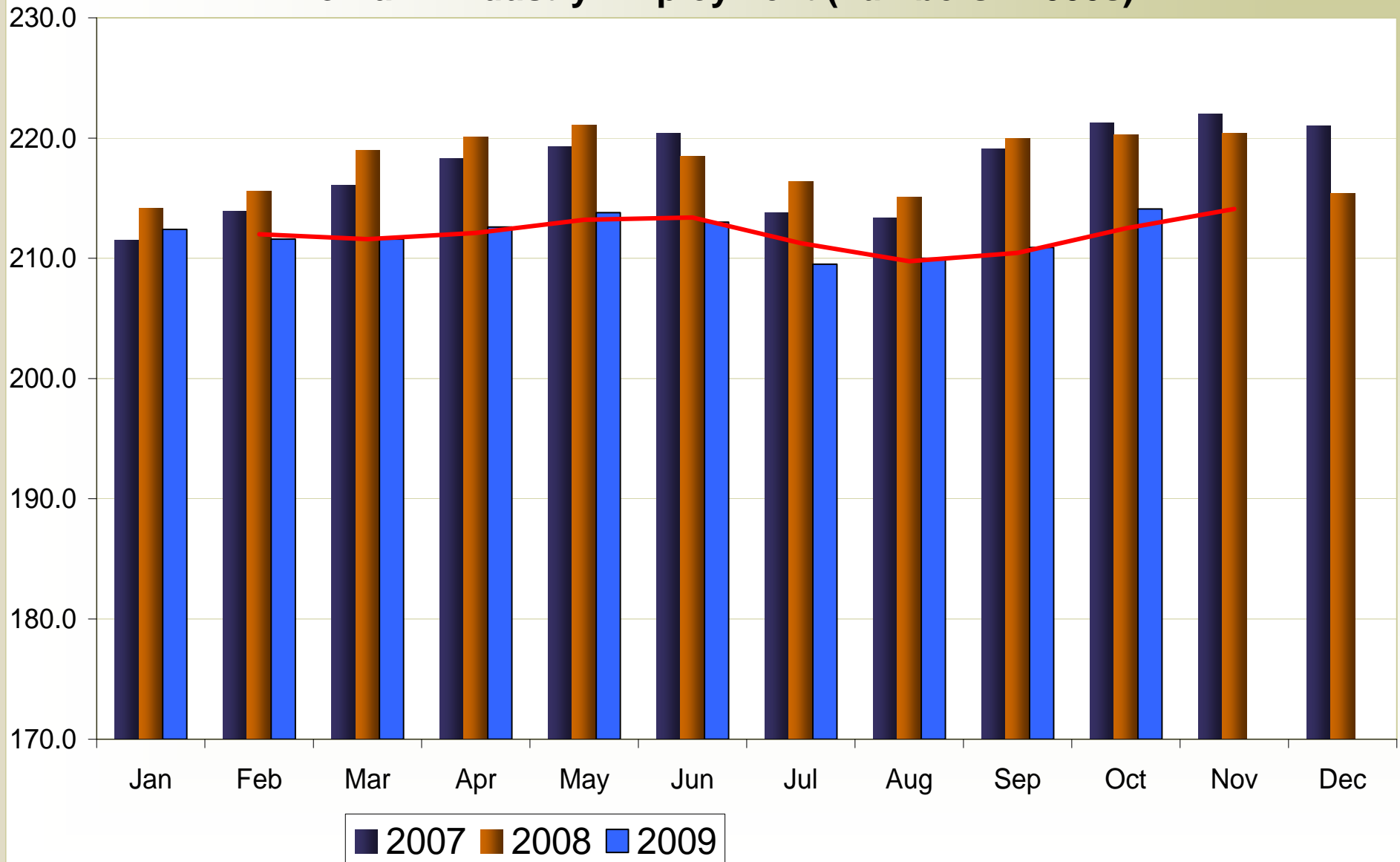
10 Month Change from 2008 to 2009



Source: LMEA, ESD

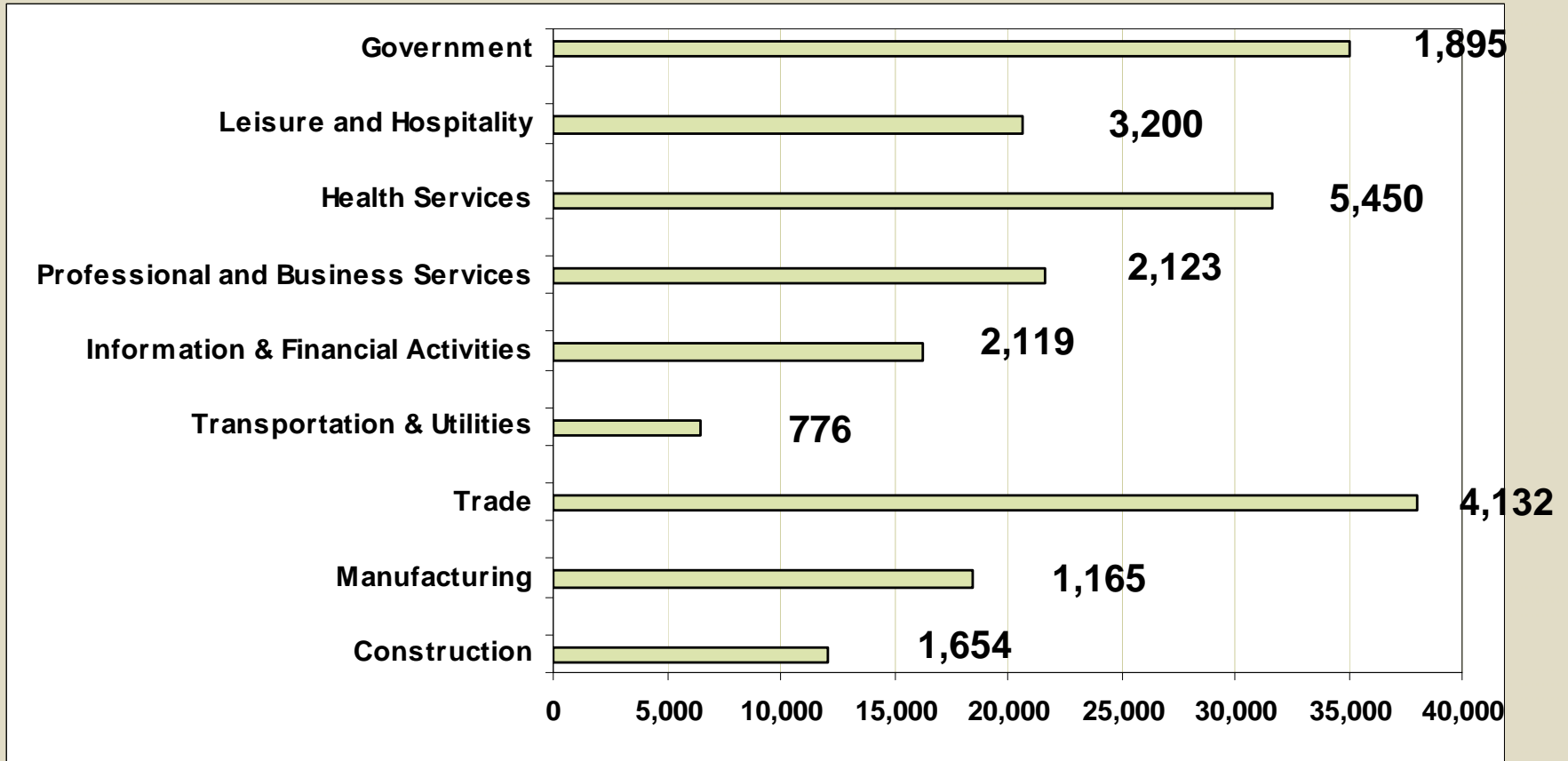


Spokane MSA (Spokane County) Nonfarm Industry Employment (numbers in 000s)

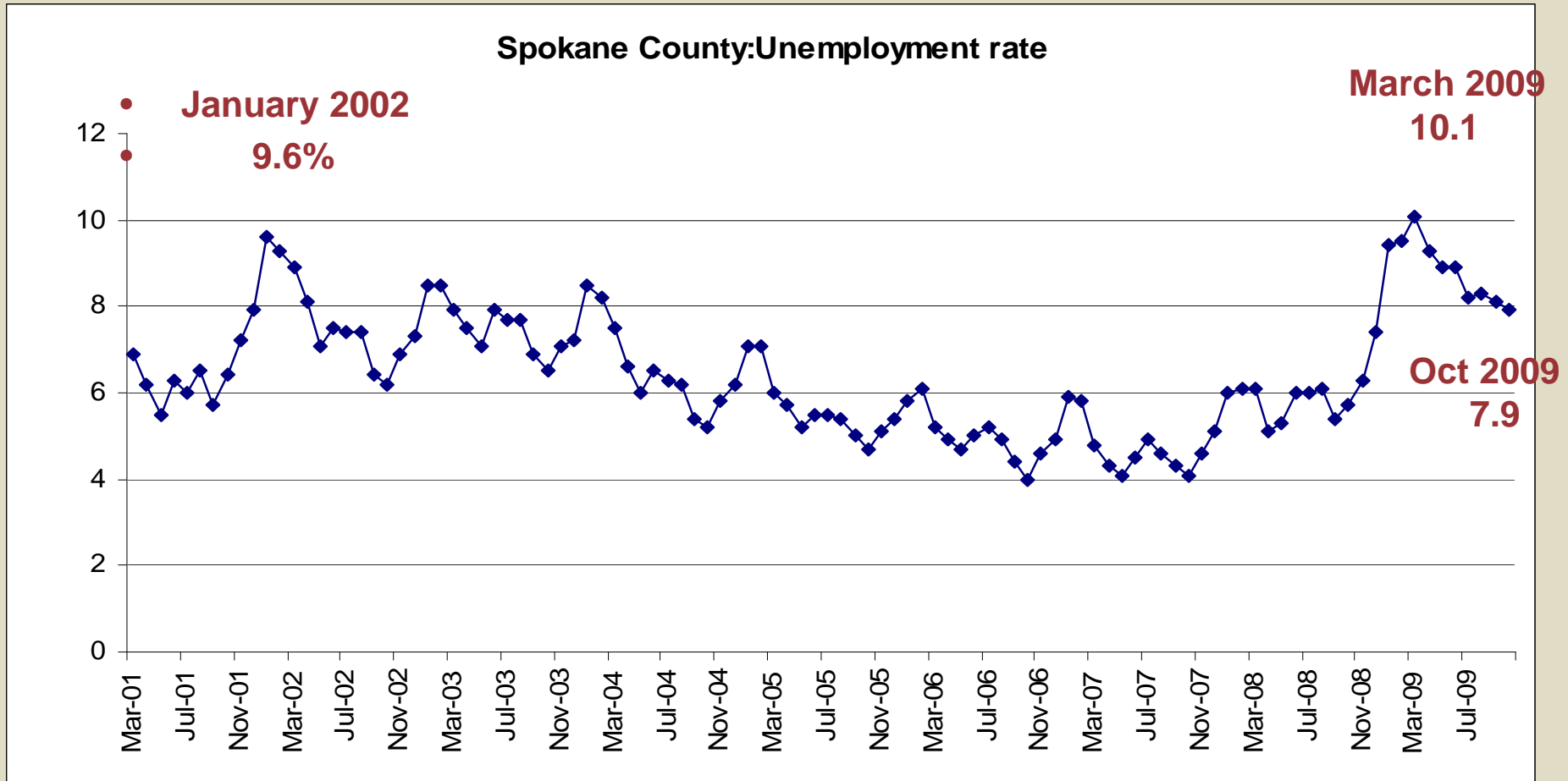


Spokane MSA: New Hires

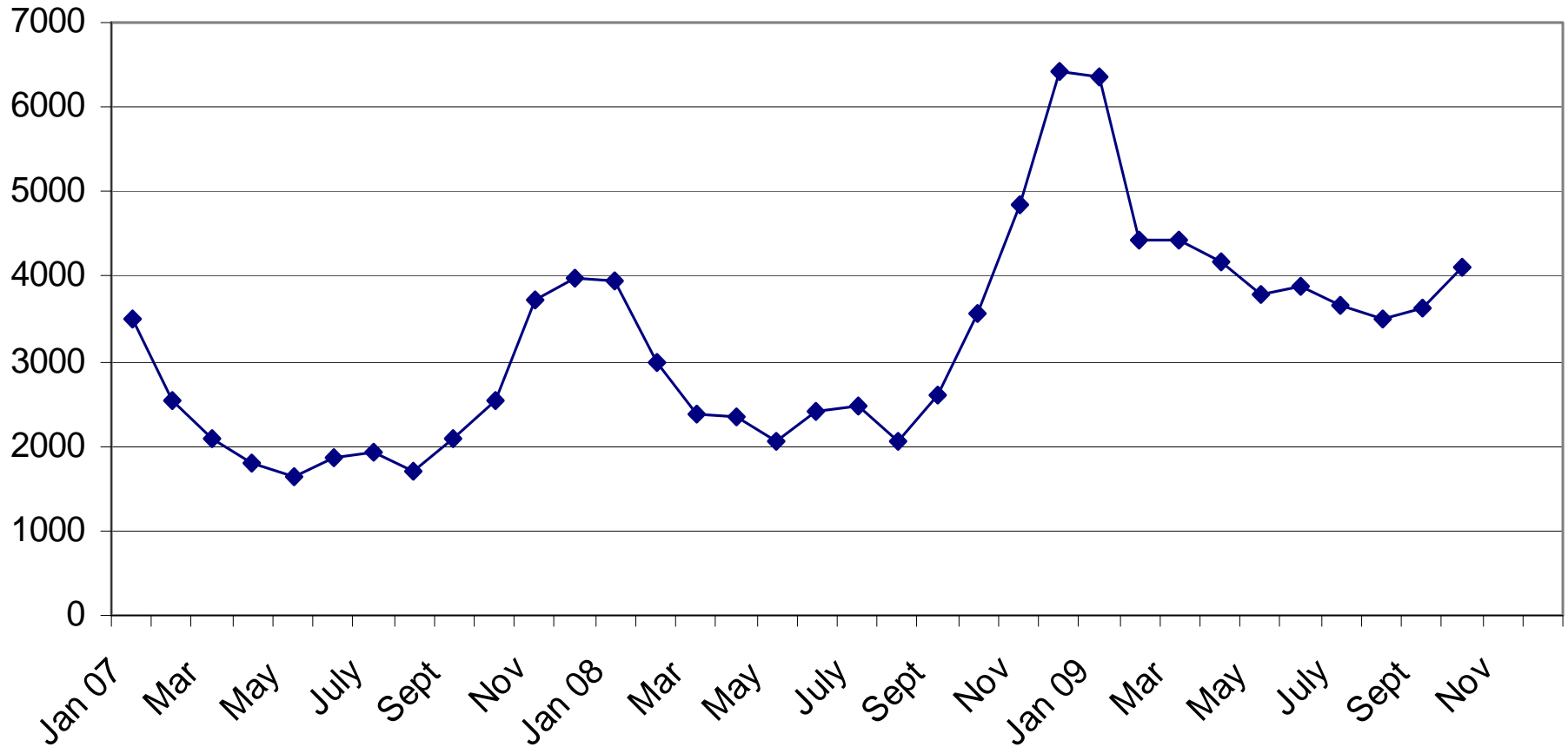
March to May 2009



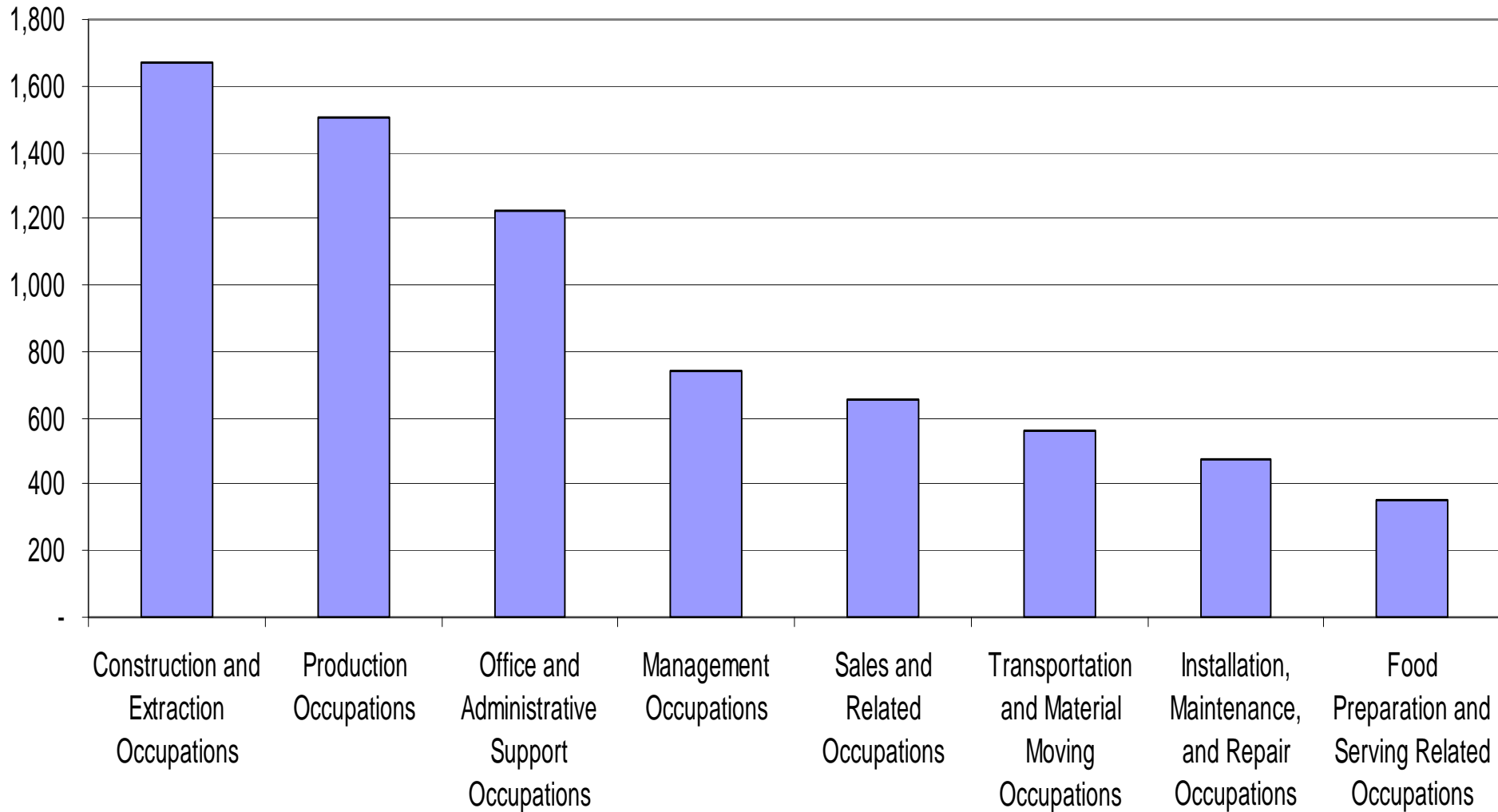
Spokane County Unemployment Rate



Initial Claims Spokane MSA November 2009



Claimants Spokane MSA December 2009



Industries to watch

Professional, Scientific & Technical Services (210)

Waste Management, Remediation & Clean water (24)

Advanced Manufacturing (230)

Transportation (Aviation) (19)

Government/Education (192)

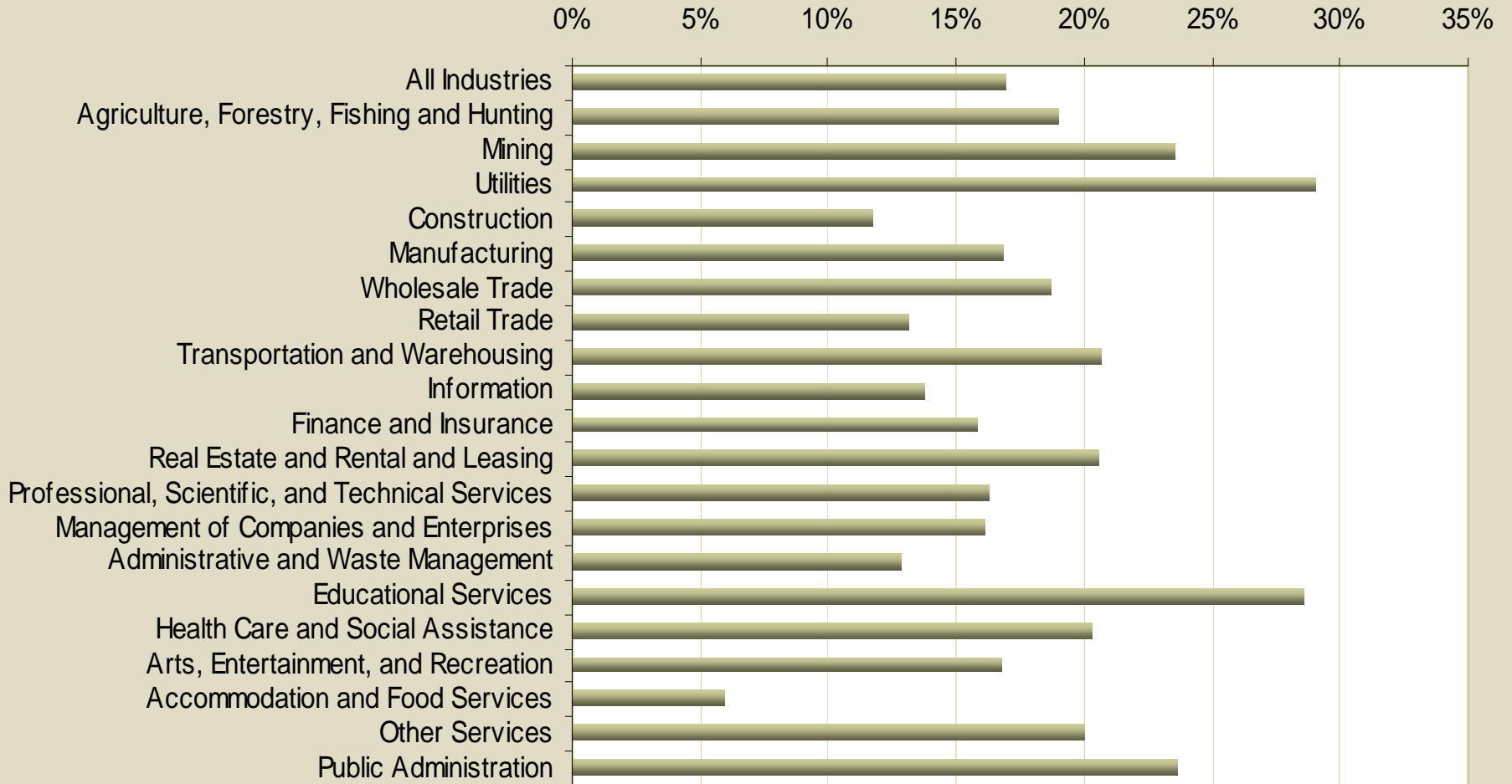
Energy & Technology (Grid)

Health Care (1,108)

Military (142)

Agriculture (90)

Percent of Jobs Held by Workers Age 55+ Spokane County, 2009



Demand/Decline List

(Updated Frequently)

Local Area Summaries

(Monthly Report)

County Profile

(Updated twice a year. Sixty-six data sheets)