



# Spokane's Labor Market

*Presented by*

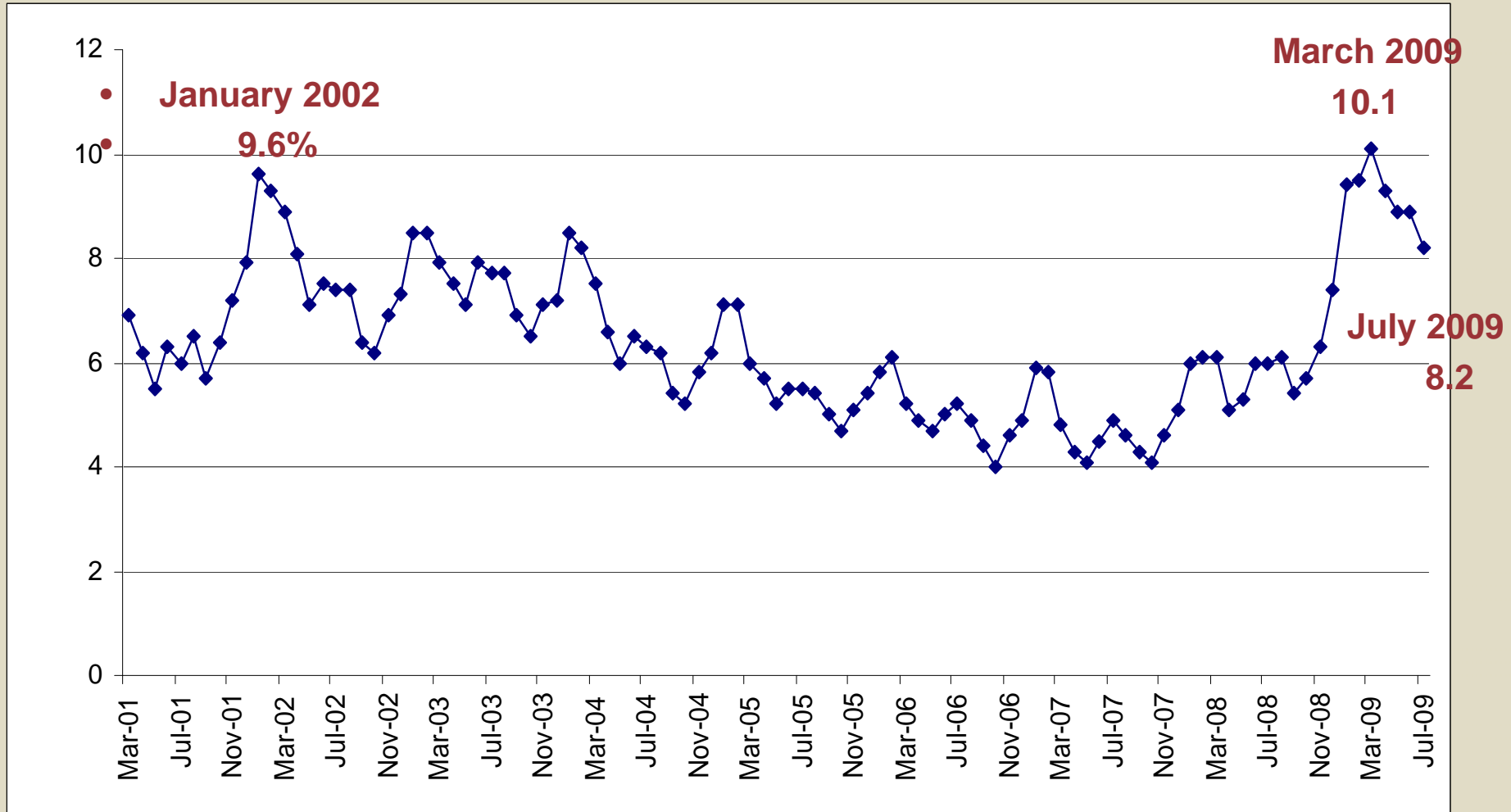
**Washington State  
Employment Security Department**

Labor Market and Economic Analysis

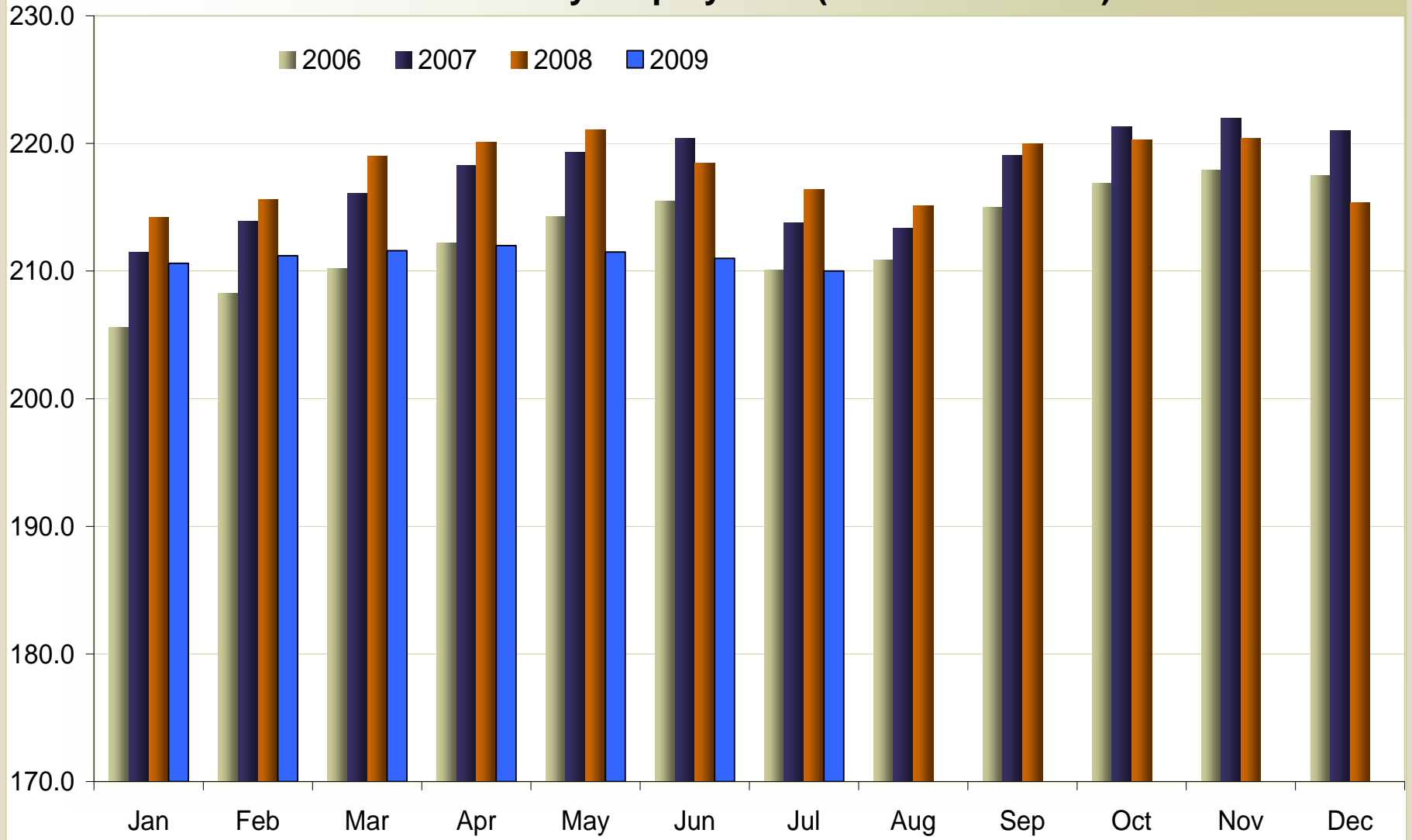


**Doug Tweedy  
Regional Labor Economist  
September 2009**

# Spokane County Unemployment Rate

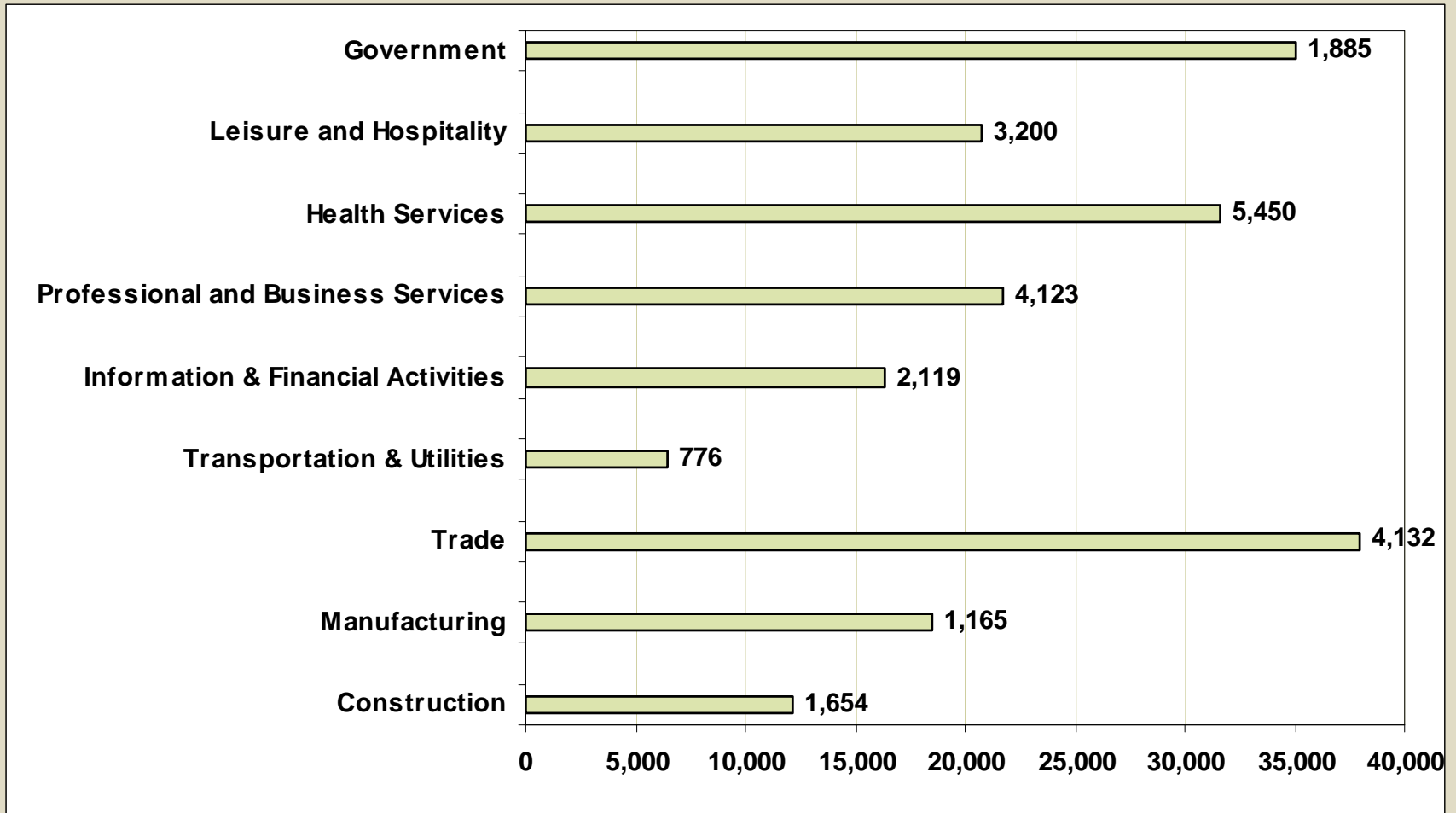


## Spokane MSA (Spokane County) Nonfarm Industry Employment (numbers in 000s)



# Spokane MSA: New Hires

2<sup>nd</sup> qtr 2009



## Major Occupation Group

## Vacancies

## Spokane Spring 2009

Management	106
Business and Financial Operations	58
Computer and Mathematical	30
Architecture and Engineering	<25
Life, Physical, and Social Science	<25
Community and Social Services	65
Legal	<25
Education, Training, and Library	57
Arts, Design, Entertainment, Sports, and Media	<25
Health Care Practitioners and Technical	426
Health Care Support	90
Protective Service	41
Food Preparation and Serving Related	181
Building and Grounds Cleaning and Maintenance	80
Personal Care and Service	177
Sales and Related	194
Office and Administrative Support	201
Farming, Fishing, and Forestry	<25
Construction and Extraction	<25
Installation, Maintenance, and Repair	60
Production	53
Transportation and Material Moving	108

# Industries to Watch

(Firms in position for future)

**Professional, Scientific & Technical Services (210)**

**Waste Management & Remediation (24)**

**Commercial Construction (1,250)**

**Advanced Manufacturing (540)**

**Government/Education (192)**

**Health Care (1,108)**

**Military (142)**

**Agriculture (90)**

**Energy**

## Local Area Summaries (Monthly Report)

*Updated Spokane MSA Profile*  
(Sixty-six data sheets)