

# Spokane's Labor Market

*Presented by*

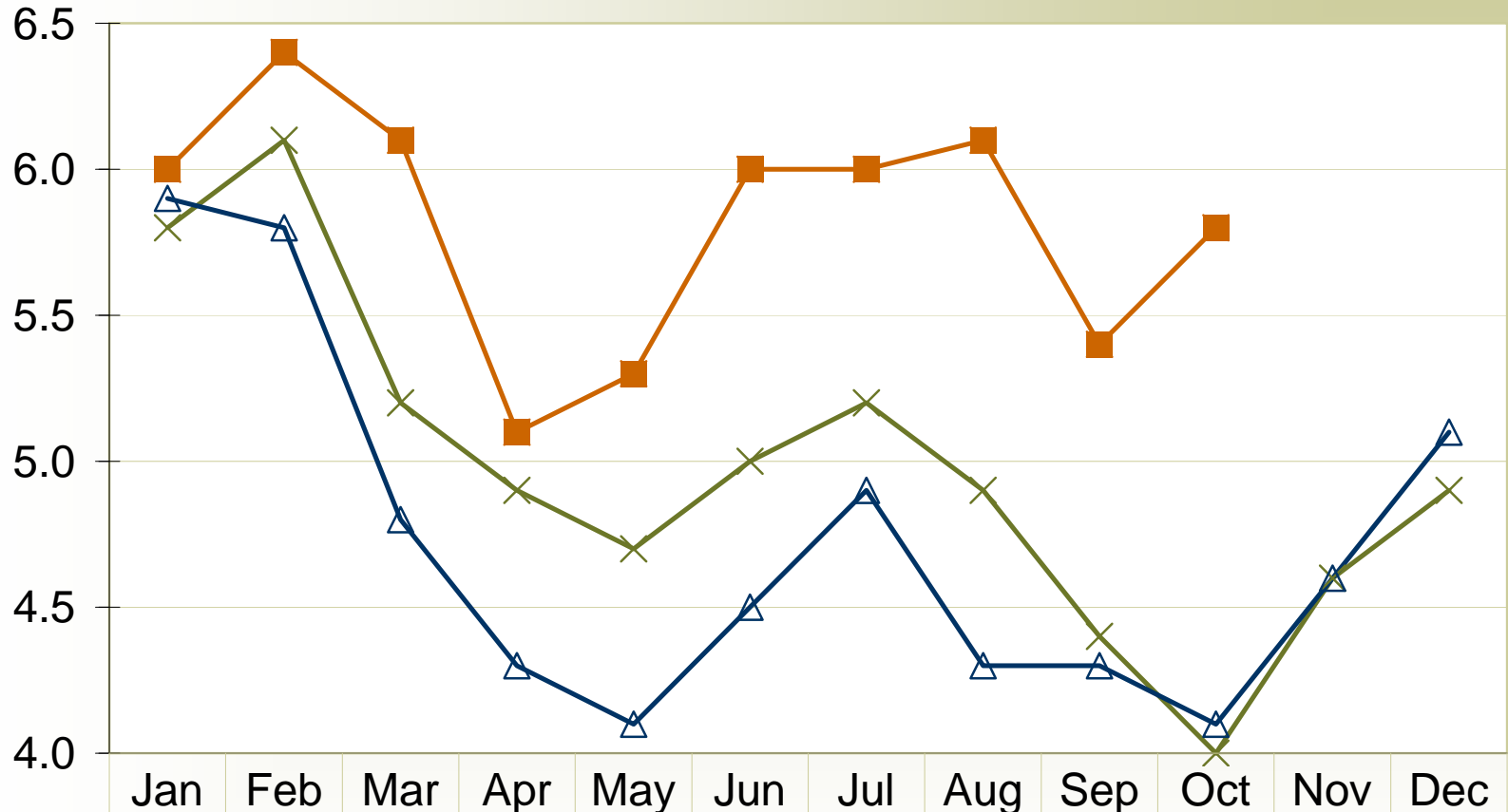
**Washington State  
Employment Security Department**

Labor Market and Economic Analysis



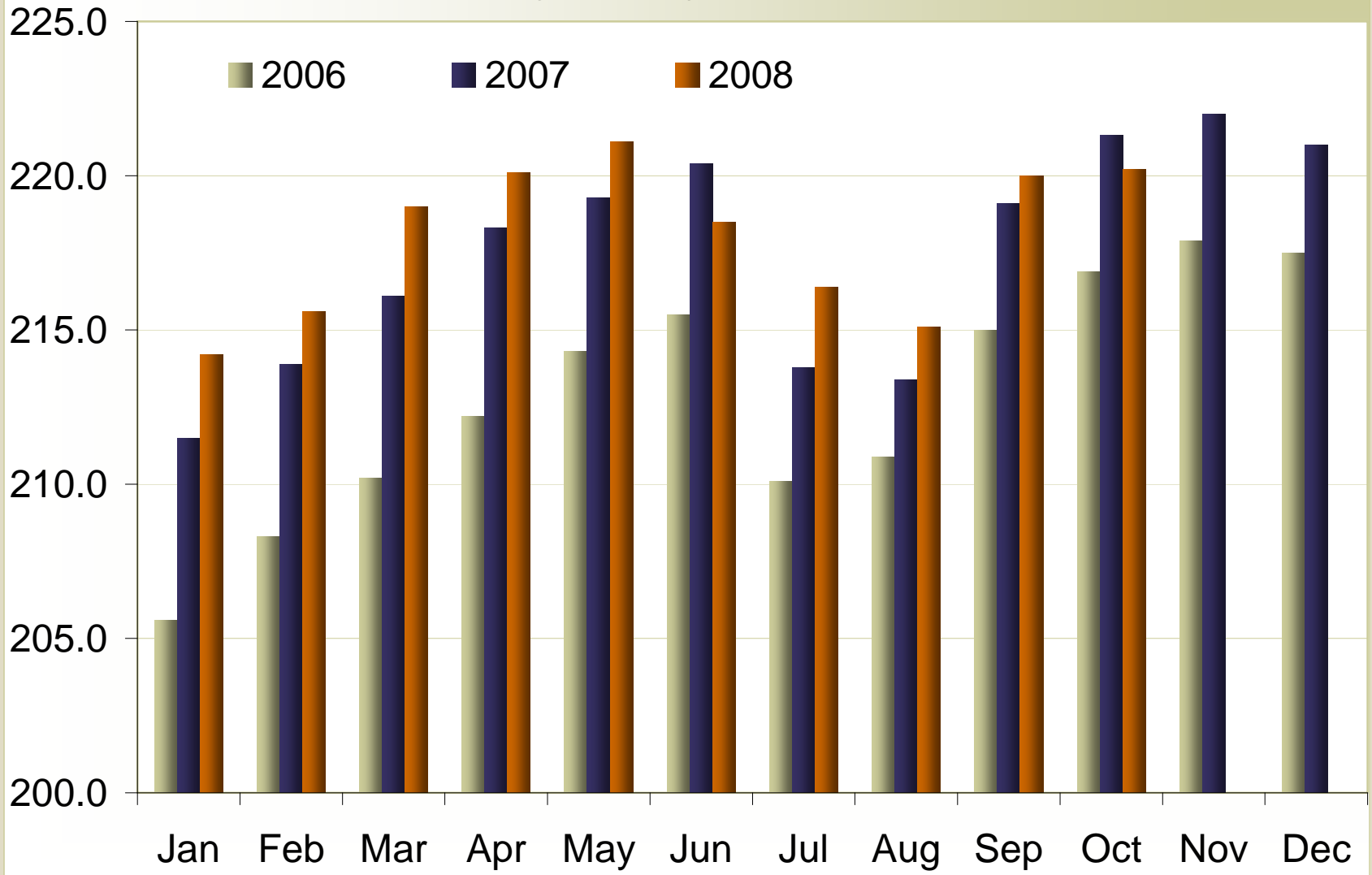
Doug Tweedy  
Regional Labor Economist  
November 20, 2008

## Spokane MSA (Spokane County) Unemployment Rate Percentages

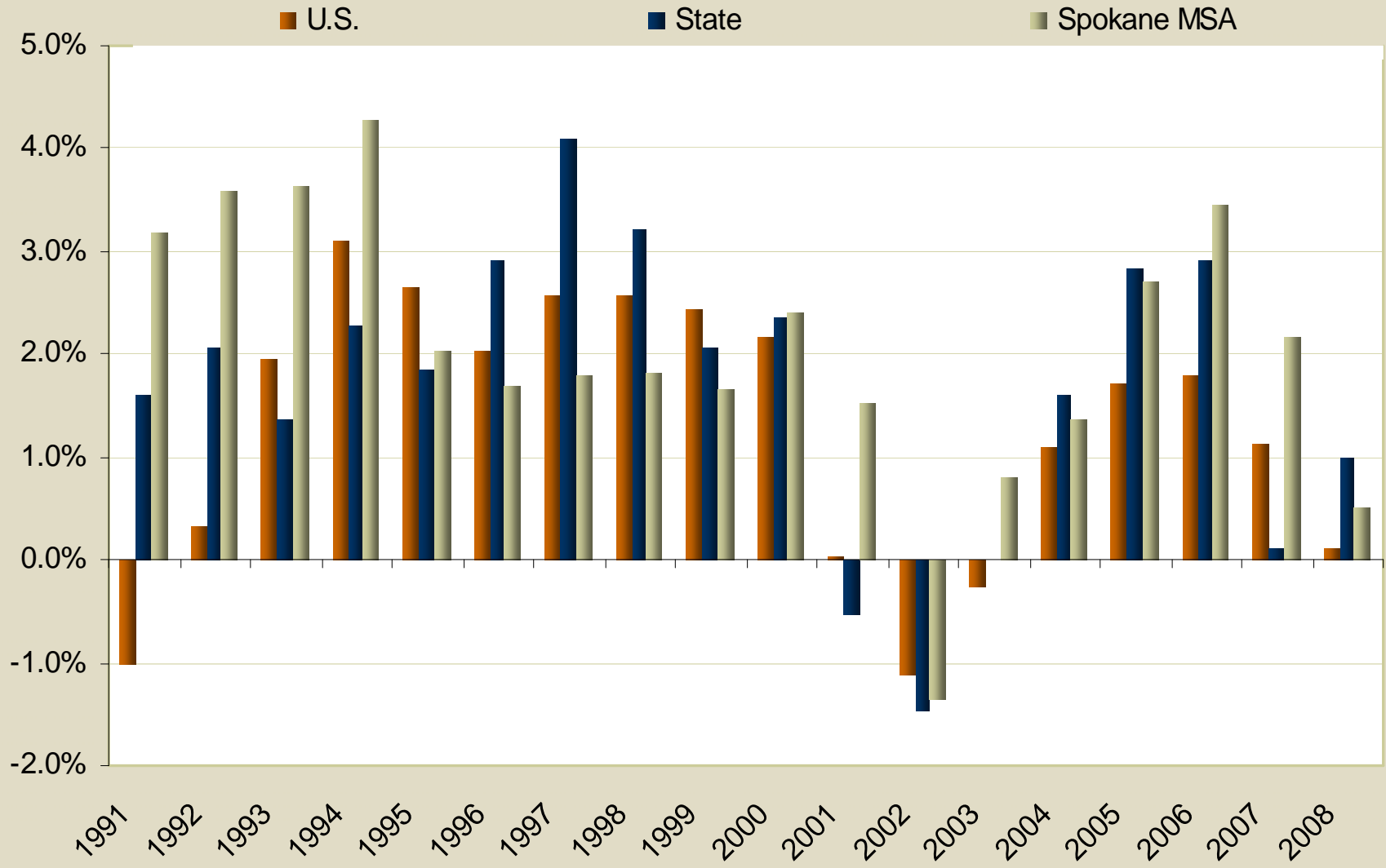


—x— 2006	5.8	6.1	5.2	4.9	4.7	5.0	5.2	4.9	4.4	4.0	4.6	4.9
—△— 2007	5.9	5.8	4.8	4.3	4.1	4.5	4.9	4.3	4.3	4.1	4.6	5.1
—■— 2008	6.0	6.4	6.1	5.1	5.3	6.0	6.0	6.1	5.4	5.8		

## Spokane MSA (Spokane County) Nonfarm Industry Employment (numbers in 000s)



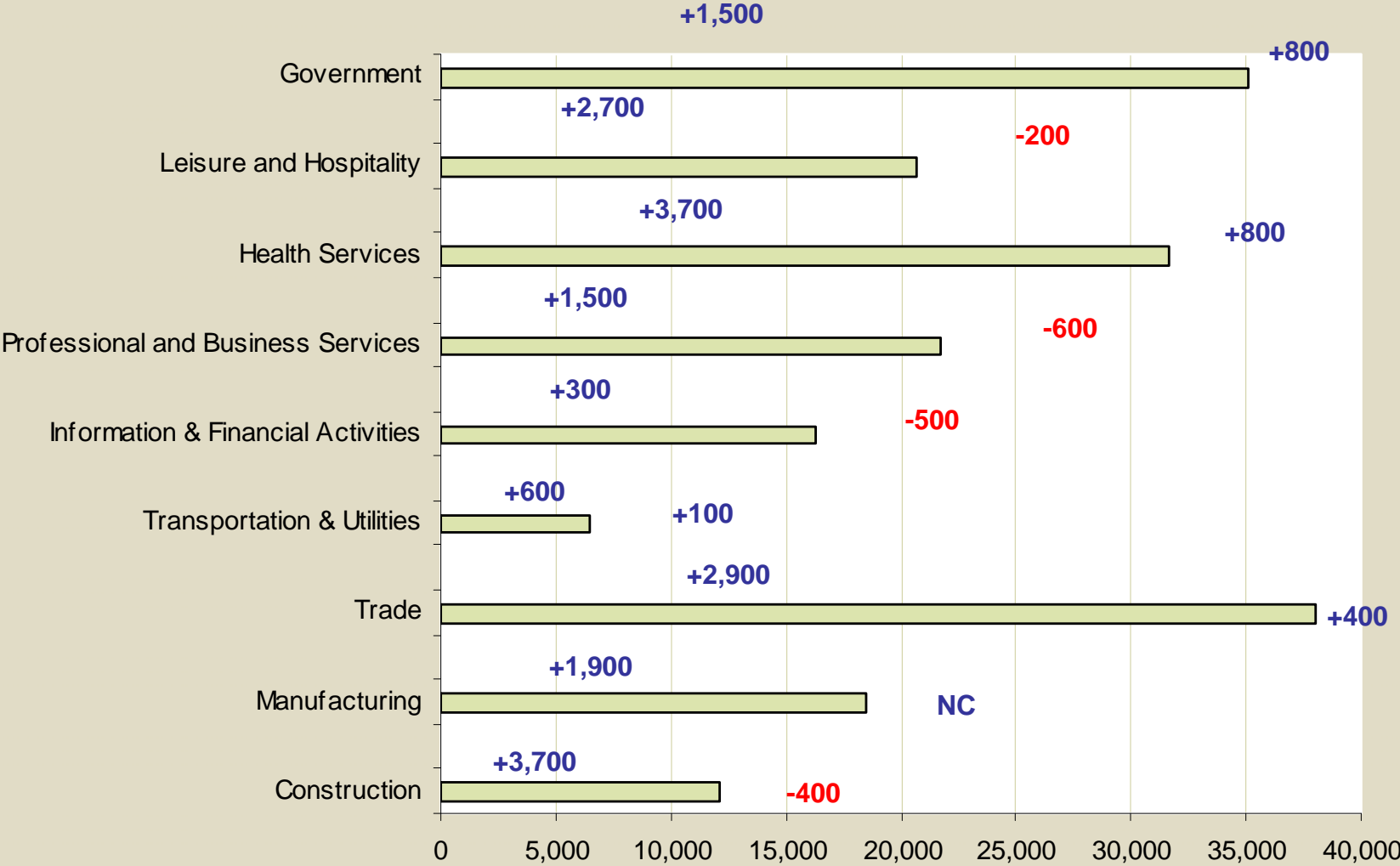
# Annual Growth in Nonfarm Employment



Source: LMEA, ESD



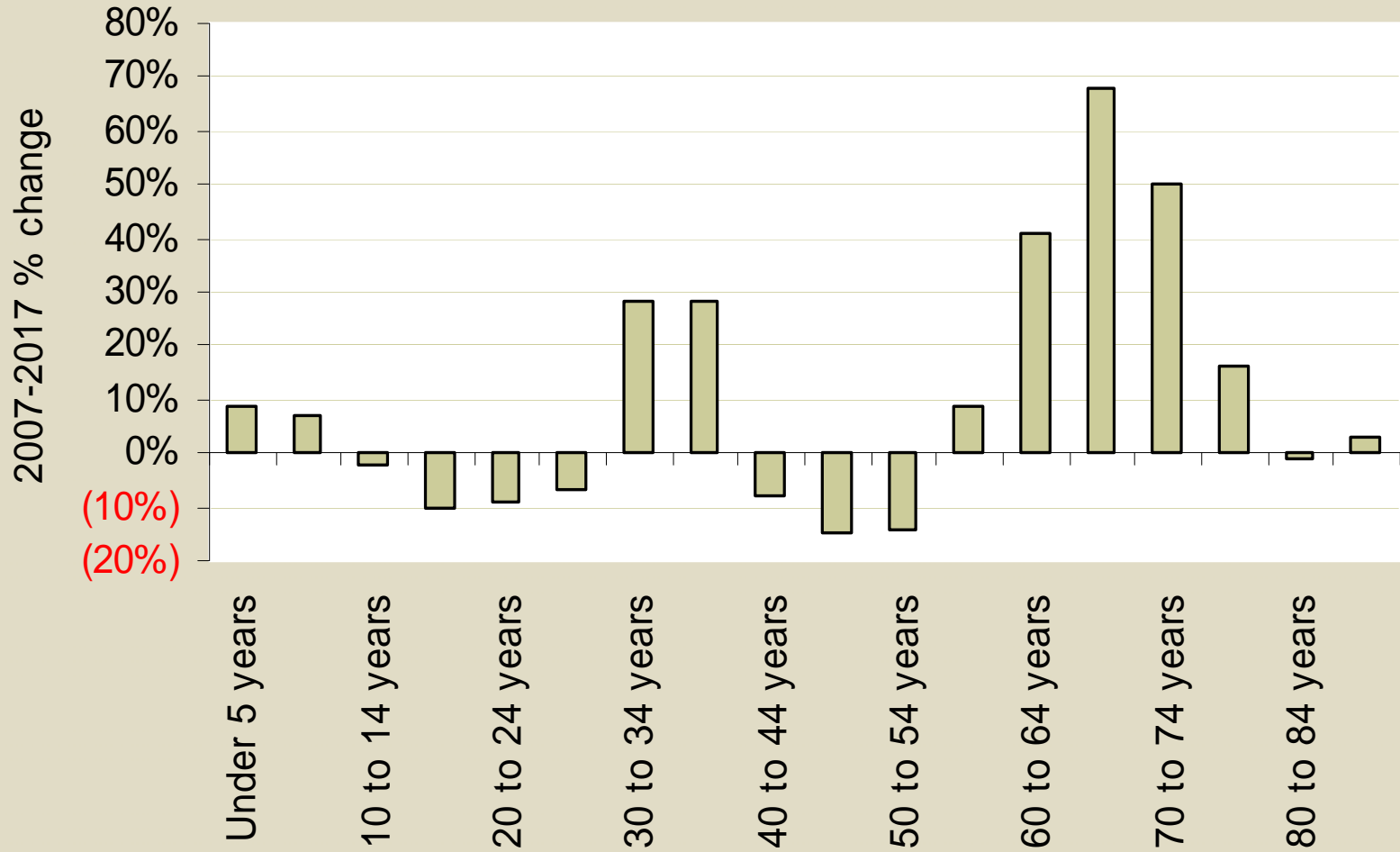
# Spokane MSA Industry Employment



Source: LMEA, ESD

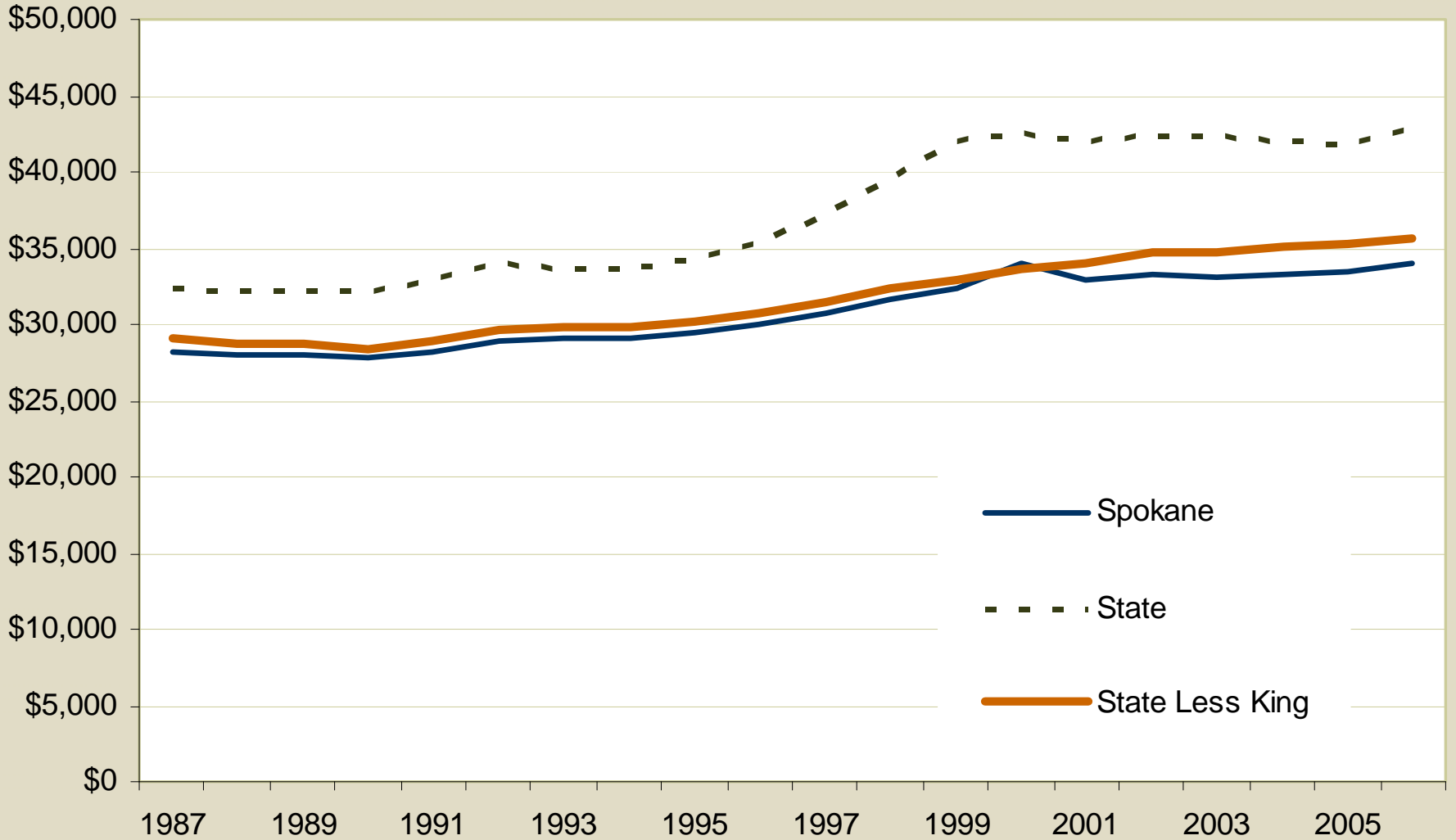


# Growth by Age, Spokane



(10%)  
(20%)

# Average Annual Wage, Adjusted for Inflation



Industry	Job Vacancies (4-08)
<b>Spokane MSA</b>	
Agriculture, forestry, fishing and hunting	18
Mining	19
Construction	345
Manufacturing	346
Wholesale trade	292
Retail trade	487
Transportation and warehousing	150
Information	108
Finance and insurance	152
Real estate and rental and leasing	142
Professional and technical services	111
Management of companies and enterprises	45
Administrative and waste services	610
Educational services	324
Health care and social assistance	1,446
Arts, entertainment, and recreation	36
Accommodation and food services	451
Other services, except public administration	395
Total	5,478

# Indicators to watch

- The price of oil
- Credit
- Exchange rate
- Consumer
- Jobs

# Recovery

- Price of gas & food boost disposable income
- Co-ordinated Global action
- Liquidity pumped into the system
- 2nd fiscal stimulus ( Infrastructure)
- Diversity & Maturity trumps Wall Street & Credit
- Co-ordinated Economic Development & Work Force Development
- Labor pool increases (Skills)

# Industries that will lead to Recovery

## “Back to Basics”

- Manufacturing
- Transportation
- Education
- Health Care
- Energy
- Environment

## Local Area Summaries

(Monthly Report)

### *County Profile*

( Updated twice a year. Sixty-six data sheets )

### *On-the Map*

(Geographic locators. Commute & Labor)